

## Lightsource Test Report

### Product Infomation

Product Type: 1.33  
 Product Number: 2

Product Spec: 长剑二代透镜款-6500K-4AH-感应  
 Buyer:

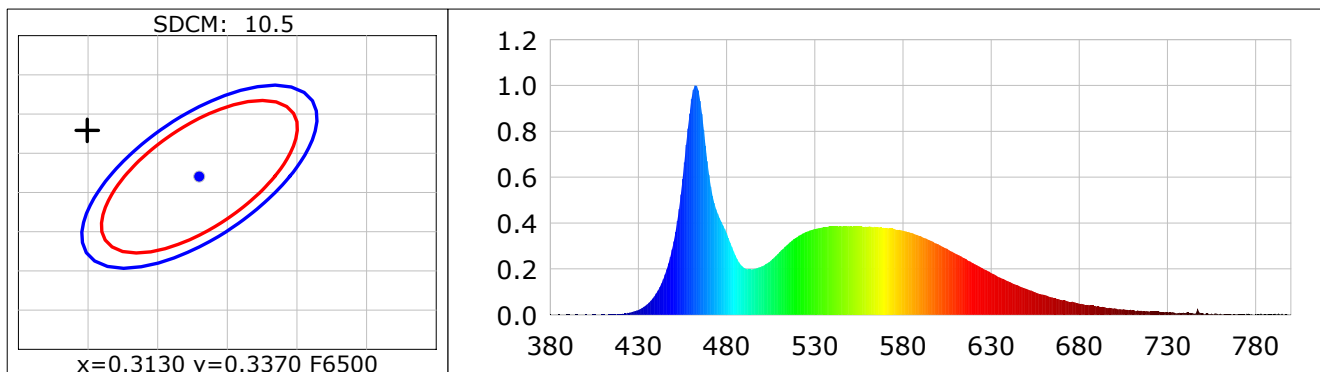
### CIE Colorimetric Parameters

Chromaticity coordinates:  $x=0.3049$   $y=0.3429$   $u(u')=0.1875$   $v=0.3163$   $v'=0.4744$   
 CCT:  $T_c=6798K$  ( $duv=0.01397$ ) Color Ratio:  $R=0.116$   $G=0.815$   $B=0.069$   
 Peak Wavelength: 462.4nm Half Bandwidth: 19.0nm  
 Dominant Wavelength: 496.1nm Color Purity: 0.090  
 Central Wave: 463.1nm Gravity Wave: 462.7nm  
 CRI:  $R_a=76.0$  TM30:  $R_f=74$ ,  $R_g=83$   
 GAI:  $GAI\_BB\_8=75.7$ ,  $GAI\_BB\_15=83.8$ ,  $GAI\_EES=74.8$   

R1 =74	R2 =91	R3 =90	R4 =63	R5 =72	R6 =85	R7 =78	R8 =55
R9 =-26	R10=76	R11=61	R12=47	R13=80	R14=95	R15=66	

Color Quality Scale:  $Q_a=74.2$ ,  $Q_f=75.1$ ,  $Q_p=70.8$ ,  $Q_g=81.0$   

Q1 =67	Q2 =87	Q3 =86	Q4 =67	Q5 =64	Q6 =62	Q7 =69	Q8 =80
Q9 =92	Q10=94	Q11=87	Q12=84	Q13=81	Q14=62	Q15=67	



### Photometric Parameters

Luminous Flux: 773.99 lm Efficiency: 0.00 lm/W Radiant Power: 2.402 W  
 Total mains efficacy: 0.00 lm/W Energy Efficiency Class: G (EU 2019/2015)  
 Auxiliary lamp correction factor: 1.00

### Electric Parameters

Voltage: 220.10V Current: 0.0000A Power: 0.00W  
 Power Factor: 0.0000 Frequency: 50.00Hz

### Test Infomation

Scan Range: 380~800:1nm	Photometric Method: sphere-spectroradiometer
Stabilization Time: 0 Sec ALC.: 1.0000	Photometric Condition: Sphere diameter: 2.00m, 4T
Max of Signal: 53307 (3514)	CCD Integration Time: 307.85 ms

Condition:  $T_x=29.3^{\circ}C$ ,  $T_i=26.5^{\circ}C$ , R.H.:60%  
 Test Lab:  
 Operator:

Test Device: CMS-2S (Plus)  
 Test Time: 2025-12-17 16:03:29  
 Inspector:

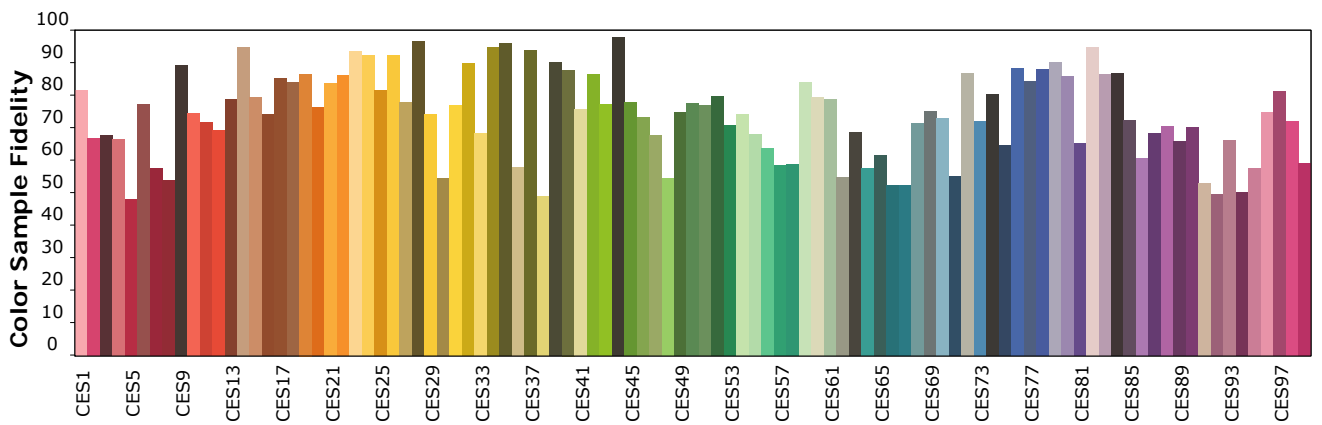
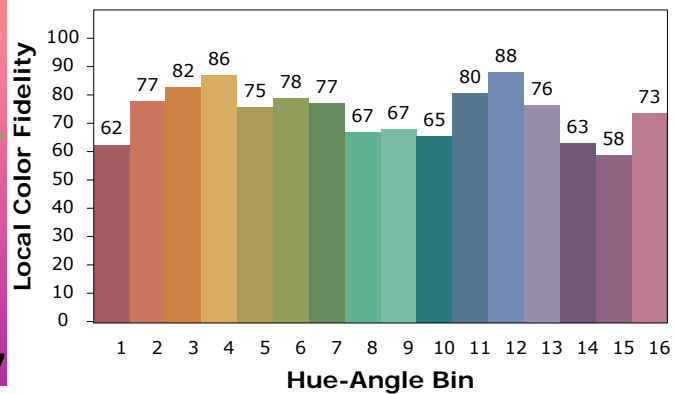
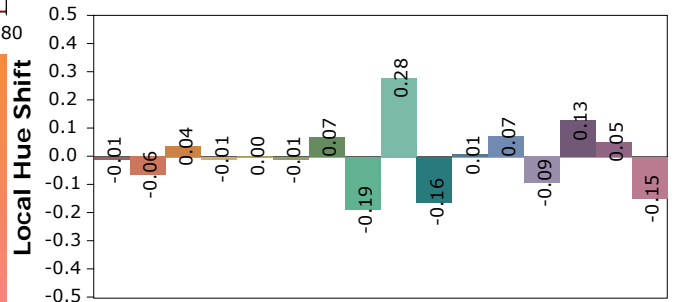
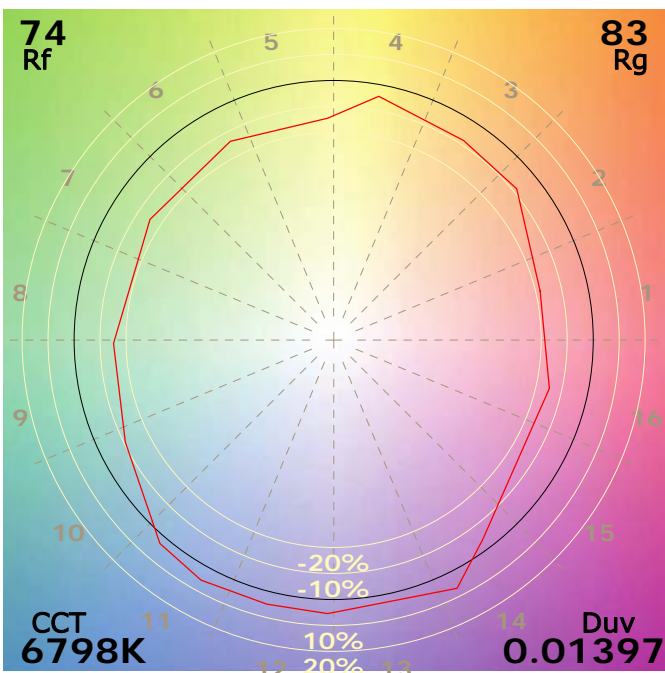
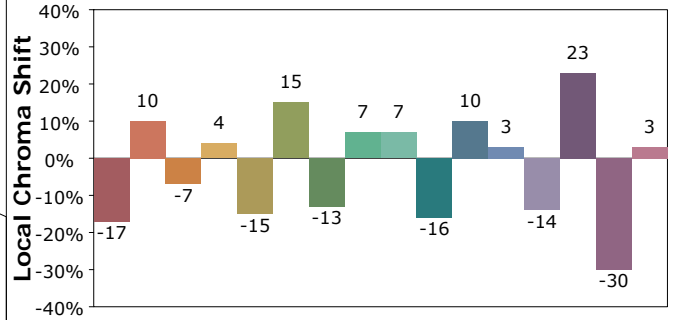
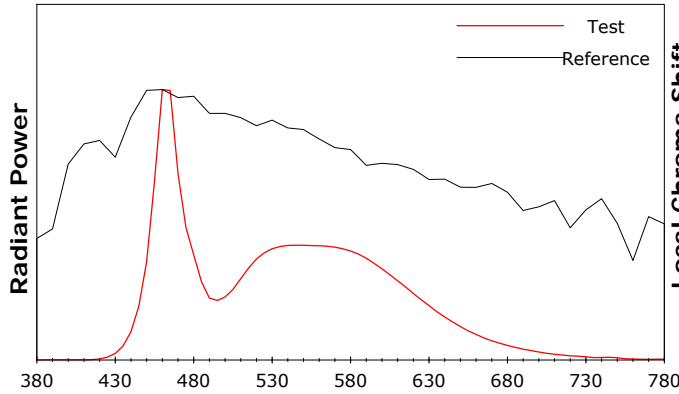
## Product Information IES TM-30-18 Color Rendition Report

Product Type: 1.33

Product Number: 2

Product Spec: 长剑二代透镜款-6500K-4AH-感应

Buyer:



Condition: Tx:29.3'C, Ti:26.5'C, R.H.:60%

Test Lab:

Operator:

Test Device: CMS-2S (Plus)

Test Time: 2025-12-17 16:03:29

Inspector: