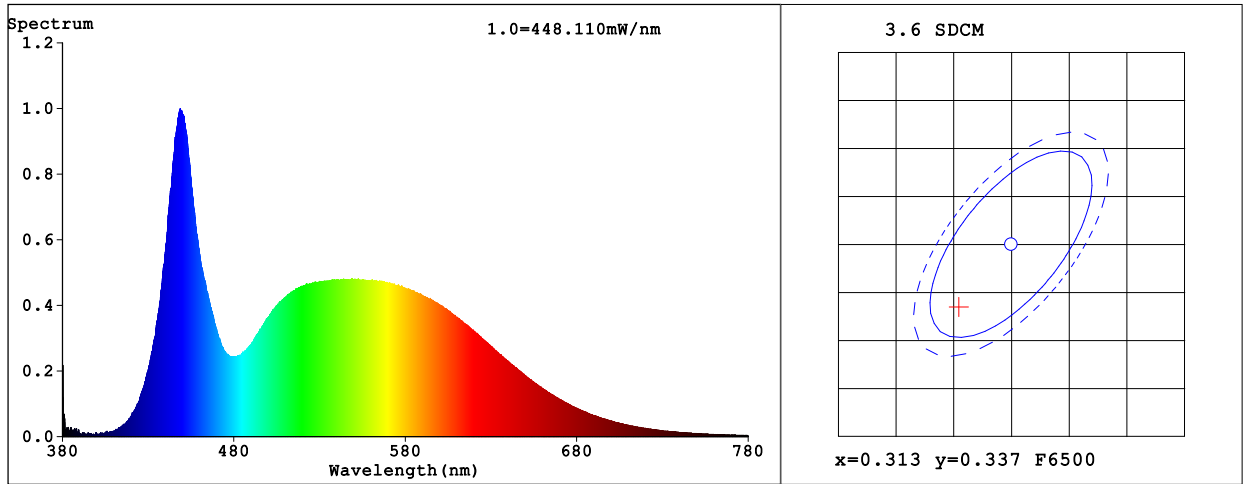


**Spectrum Test Report**



**Color Parameters:**

Chromaticity Coordinate:  $x=0.3085$   $y=0.3305$  /  $u'=0.1943$   $v'=0.4685$   
 CCT=6723K (Duv=0.0061) Dominant WL:Ld =490.2nm Purity=8.6%  
 Ratio:R=12.9% G=81.5% B=5.6% Peak WL:Lp=448.7nm FWHM=23.2nm  
 Render Index:Ra=82.5 AvgR = 75.1 TM30:Rf=82 Rg=94  
 R1 =80 R2 =86 R3 =90 R4 =83 R5 =82 R6 =81 R7 =89  
 R8 =71 R9 =6 R10=66 R11=82 R12=60 R13=81 R14=95 R15=75

**Photo Parameters:**

Flux = 13901 lm Eff. : 114.95 lm/W Fe = 45.27 W  
 Scotopic:31599 S/P:2.2732  
 Photosynthetic:PPF:199.02umol/s PRF:44542mW(400-700nm)

**Electrical parameters:**

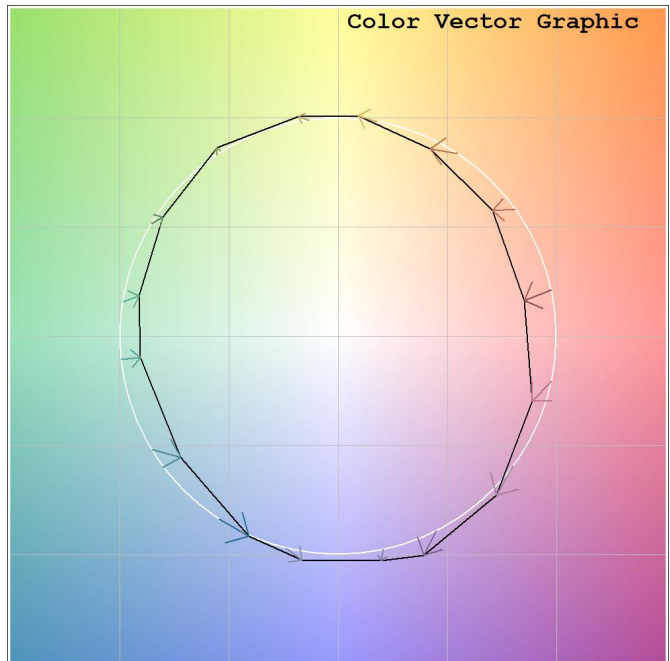
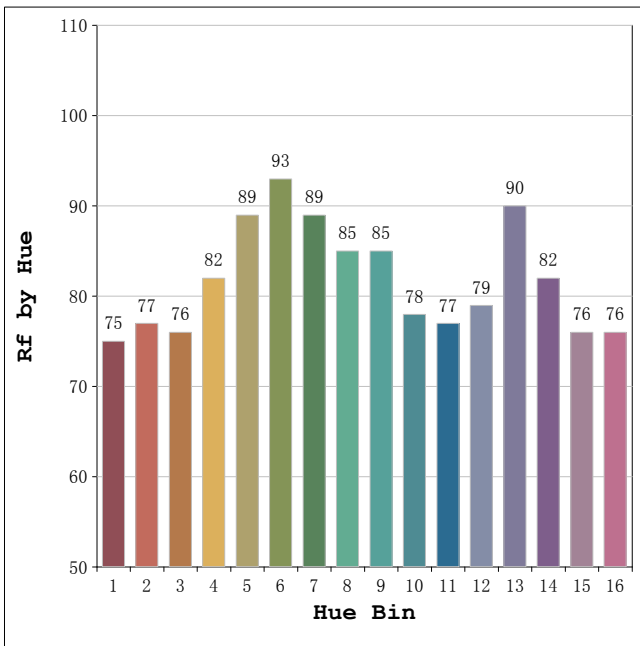
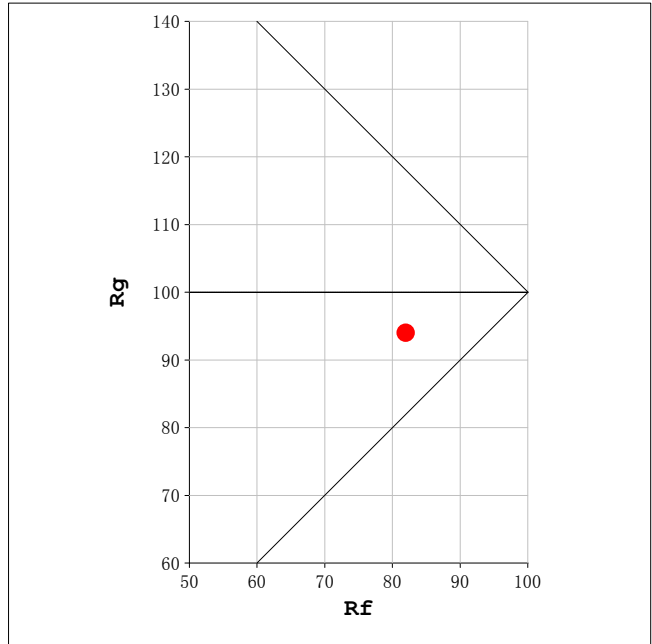
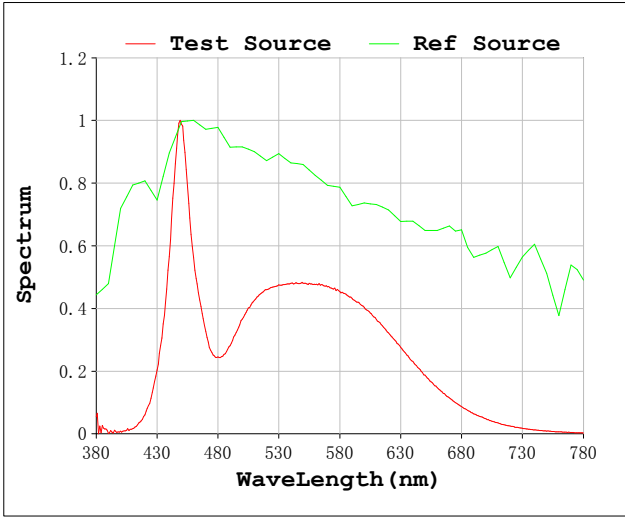
V = 219.77 V I = 0.5705 A P = 120.9 W PF = 0.9644  
 LEVEL:OUT WHITE:ANSI\_6500K

Status: Integral T = 37 ms Ip = 49304 (75%)

Model:AX-JG-D-120W  
 Tester:DAMIN  
 Temperature:25.3Deg  
 Manufacturer:

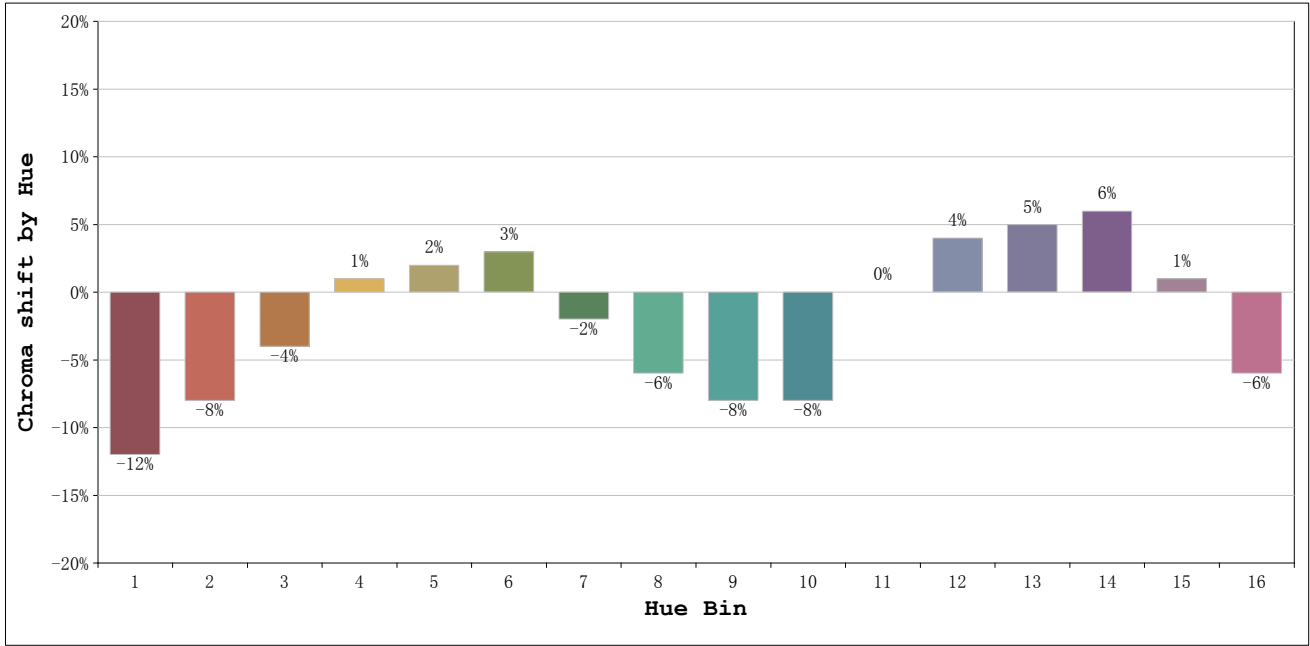
Number:AX-JG-D-120W1  
 Date:2025-01-19  
 Humidity:65.0%  
 Remarks:

Rf: 82      CCT: 6723 K      u': 0.1943  
 Rg: 94      Duv: 0.0061      v': 0.4685



Model:AX-JG-D-120W  
 Tester:DAMIN  
 Temperature:25.3Deg  
 Manufacturer:

Number:AX-JG-D-120W1  
 Date:2025-01-19  
 Humidity:65.0%  
 Remarks:



Hue Bin	Hue Angle	Rf	Graphic shift (%)	
			Chroma	Hue
1	0.0° - 22.5°	75	-12	-1
2	22.5° - 45.0°	77	-8	5
3	45.0° - 67.5°	76	-4	12
4	67.5° - 90.0°	82	1	9
5	90.0° - 112.5°	89	2	4
6	112.5° - 135.0°	93	3	-1
7	135.0° - 157.5°	89	-2	-4
8	157.5° - 180.0°	85	-6	-3
9	180.0° - 202.5°	85	-8	1
10	202.5° - 225.0°	78	-8	10
11	225.0° - 247.5°	77	0	16
12	247.5° - 270.0°	79	4	8
13	270.0° - 292.5°	90	5	-1
14	292.5° - 315.0°	82	6	-10
15	315.0° - 337.5°	76	1	-14
16	337.5° - 360.0°	76	-6	-10

Model:AX-JG-D-120W  
 Tester:DAMIN  
 Temperature:25.3Deg  
 Manufacturer:

Number:AX-JG-D-120W1  
 Date:2025-01-19  
 Humidity:65.0%  
 Remarks: