

## Lightsource Test Report

### Product Infomation

Product Spec: 长剑二代反光2头-6500K-5AH-感应

Buyer:

### CIE Colorimetric Parameters

Chromaticity coordinates:  $x=0.3085$   $y=0.3312$   $u(u')=0.1942$   $v=0.3126$   $v'(v')=0.4689$

CCT:  $T_c=6714K$  ( $duv=0.00640$ )

Color Ratio:  $R=0.134$   $G=0.809$   $B=0.057$

Peak Wavelength: 451.6nm

Half Bandwidth: 18.1nm

Dominant Wavelength: 490.6nm

Color Purity: 0.085

Central Wave: 452.7nm

Gravity Wave: 452.5nm

CRI:  $R_a=84.8$

TM30:  $R_f=84$ ,  $R_g=95$

GAI:  $GAI\_BB\_8=90.4$ ,  $GAI\_BB\_15=96.2$ ,  $GAI\_EES=88.9$

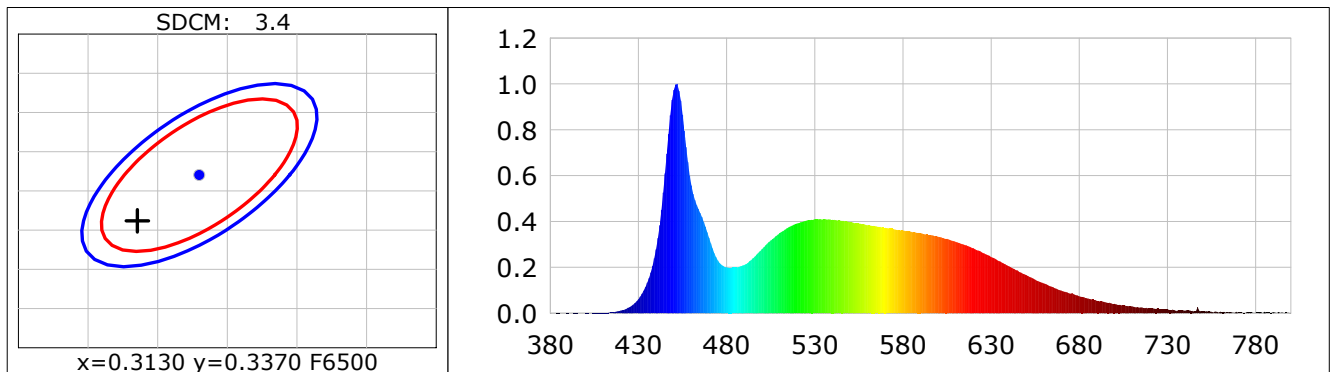
$R1=83$   $R2=88$   $R3=91$   $R4=84$   $R5=83$   $R6=83$   $R7=91$   $R8=75$

$R9=20$   $R10=71$   $R11=83$   $R12=54$   $R13=85$   $R14=95$   $R15=80$

Color Quality Scale:  $Q_a=83.7$ ,  $Q_f=83.4$ ,  $Q_p=84.1$ ,  $Q_g=92.6$

$Q1=85$   $Q2=99$   $Q3=79$   $Q4=73$   $Q5=80$   $Q6=83$   $Q7=87$   $Q8=91$

$Q9=96$   $Q10=88$   $Q11=86$   $Q12=86$   $Q13=87$   $Q14=76$   $Q15=80$



### Photometric Parameters

Luminous Flux: 838.86 lm

Efficiency: 0.00 lm/W

Radiant Power: 2.716 W

Total mains efficacy: 0.00 lm/W

Energy Efficiency Class: G (EU 2019/2015)

Auxiliary lamp correction factor: 1.00

### Electric Parameters

Voltage: 220.00V

Current: 0.0000A

Power: 0.00W

Power Factor: 0.0000

Frequency: 49.99Hz

### Test Infomation

Scan Range: 380~800:1nm

Photometric Method: sphere-spectroradiometer

Stabilization Time: 0 Sec ALC.: 1.0000

Photometric Condition: Sphere diameter: 2.00m, 4T

Max of Signal: 47711 (3283)

CCD Integration Time: 272.00 ms

Condition:  $T_x=26.6^{\circ}C$ ,  $T_i=24.6^{\circ}C$ , R.H.:60%

Test Lab:

Operator:

Test Device: CMS-2S (Plus)

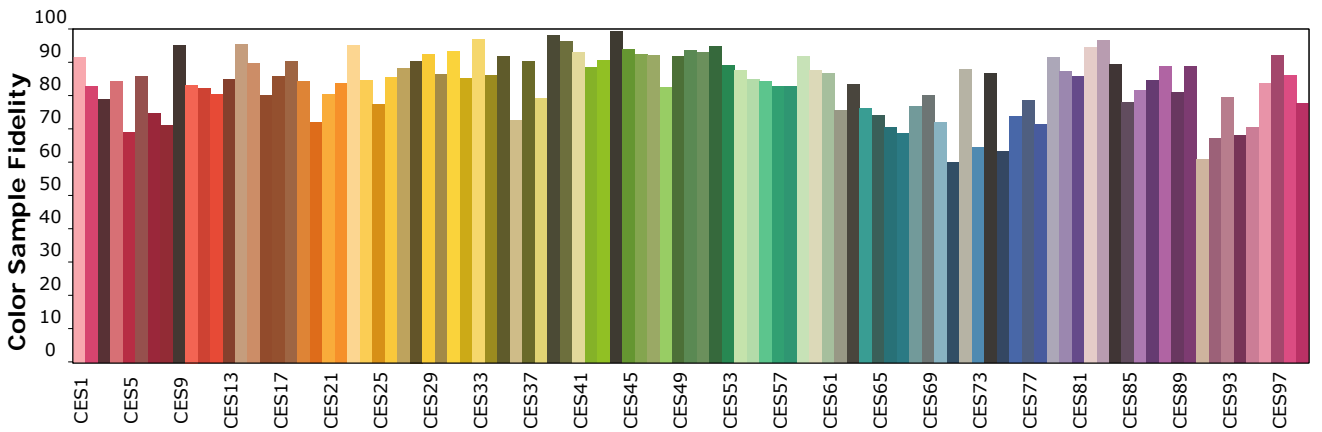
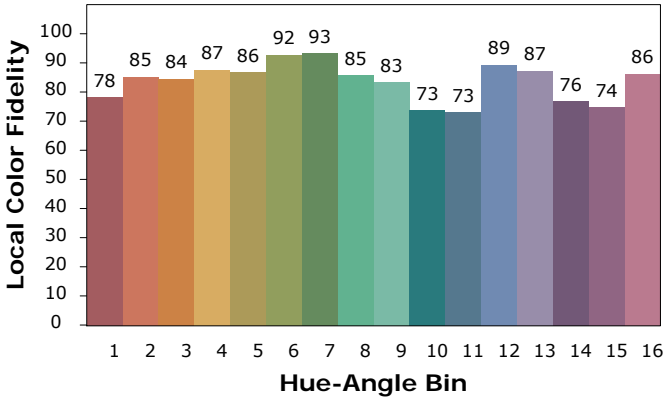
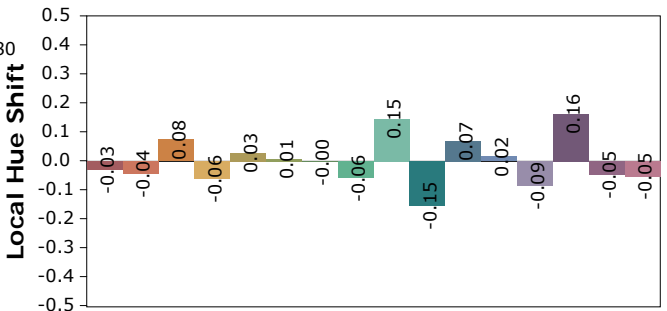
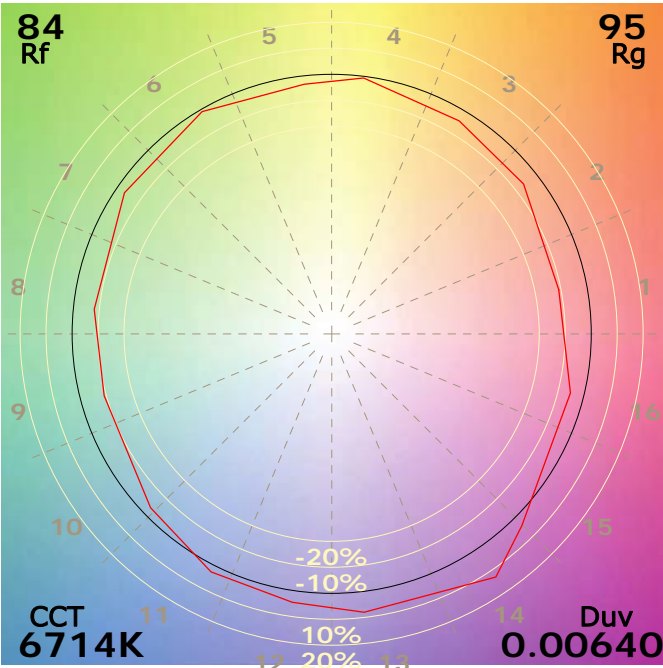
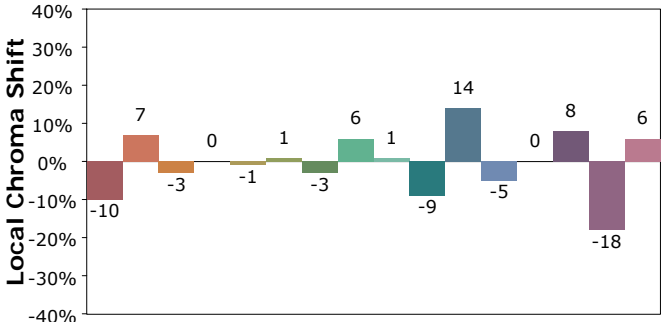
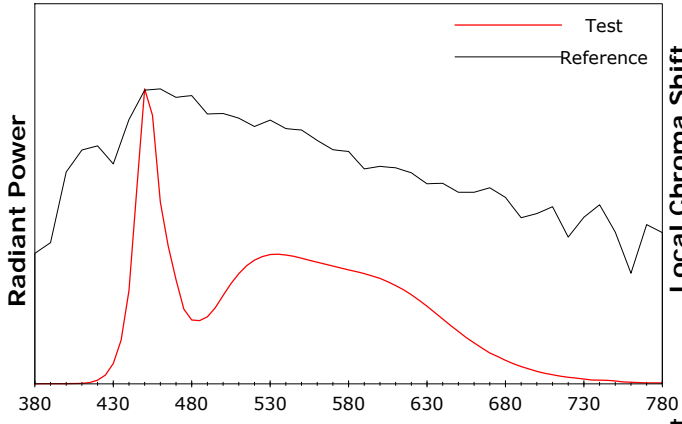
Test Time: 2026-01-11 16:30:48

Inspector:

**Product Information IES TM-30-18 Color Rendition Report**

Product Spec: 长剑二代反光2头-6500K-5AH-感应

Buyer:



Condition: Tx:26.6'C, Ti:24.6'C, R.H.:60%

Test Lab:

Operator:

Test Device: CMS-2S (Plus)

Test Time: 2026-01-11 16:30:48

Inspector: