

Lightsource Test Report

Product Infomation

Product Spec: 长剑二代透镜2头-6500K-8AH-感应

Product Number: 4

Buyer:

CIE Colorimetric Parameters

Chromaticity coordinates: $x=0.3038$ $y=0.3409$ $u(u')=0.1874$ $v=0.3155$ $v'=0.4733$

CCT: $T_c=6872K$ ($duv=0.01360$)

Color Ratio: $R=0.116$ $G=0.815$ $B=0.069$

Peak Wavelength: 462.0nm

Half Bandwidth: 18.1nm

Dominant Wavelength: 495.0nm

Color Purity: 0.095

Central Wave: 462.6nm

Gravity Wave: 462.4nm

CRI: $R_a=76.1$

TM30: $R_f=74$, $R_g=83$

GAI: $GAI_BB_8=76.1$, $GAI_BB_15=84.2$, $GAI_EES=75.4$

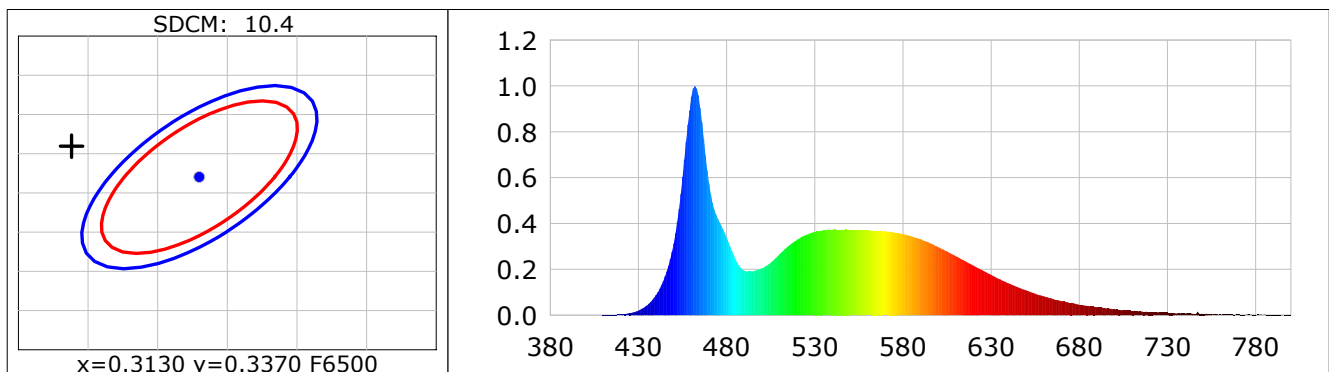
$R1=74$ $R2=91$ $R3=90$ $R4=63$ $R5=72$ $R6=85$ $R7=78$ $R8=55$

$R9=-26$ $R10=76$ $R11=61$ $R12=46$ $R13=80$ $R14=95$ $R15=66$

Color Quality Scale: $Q_a=74.3$, $Q_f=75.1$, $Q_p=71.0$, $Q_g=81.2$

$Q1=67$ $Q2=88$ $Q3=85$ $Q4=67$ $Q5=64$ $Q6=62$ $Q7=70$ $Q8=80$

$Q9=93$ $Q10=94$ $Q11=87$ $Q12=84$ $Q13=81$ $Q14=63$ $Q15=67$



Photometric Parameters

Luminous Flux: 1562.5 lm

Efficiency: 0.00 lm/W

Radiant Power: 4.859 W

Total mains efficacy: 0.00 lm/W

Energy Efficiency Class: G (EU 2019/2015)

Auxiliary lamp correction factor: 1.00

Electric Parameters

Voltage: 220.00V

Current: 0.0000A

Power: 0.00W

Power Factor: 0.0000

Frequency: 50.00Hz

Test Infomation

Scan Range: 380~800:1nm

Photometric Method: sphere-spectroradiometer

Stabilization Time: 0 Sec ALC.: 1.0000

Photometric Condition: Sphere diameter: 2.00m, 4 π

Max of Signal: 54284 (3197)

CCD Integration Time: 156.48 ms

Condition: $T_x=26.6^\circ C$, $T_i=24.4^\circ C$, R.H.:60%

Test Lab:

Operator:

Test Device: CMS-2S (Plus)

Test Time: 2026-01-10 21:35:41

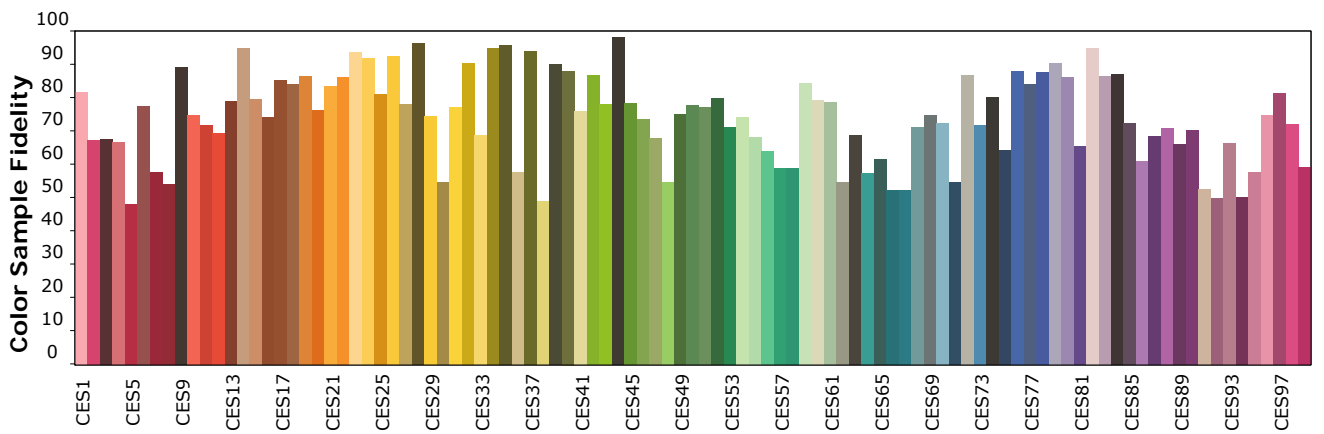
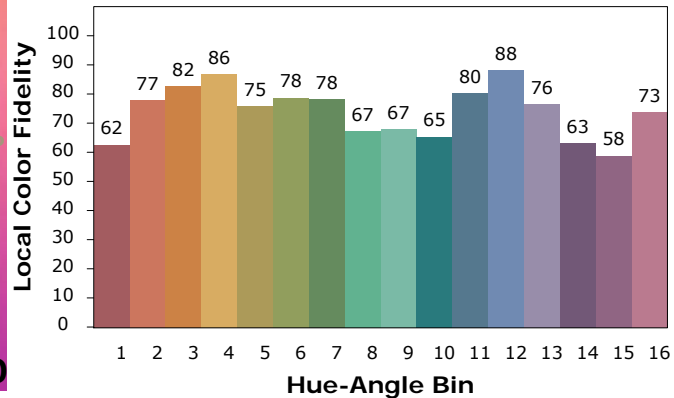
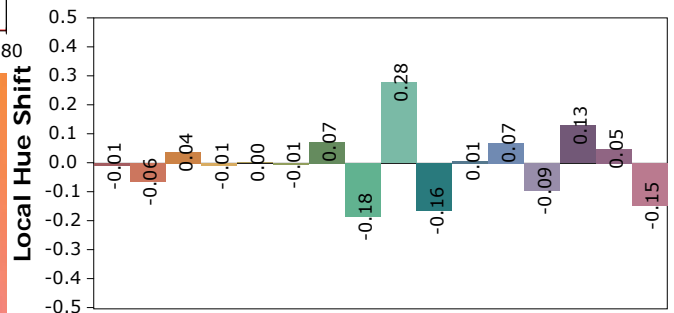
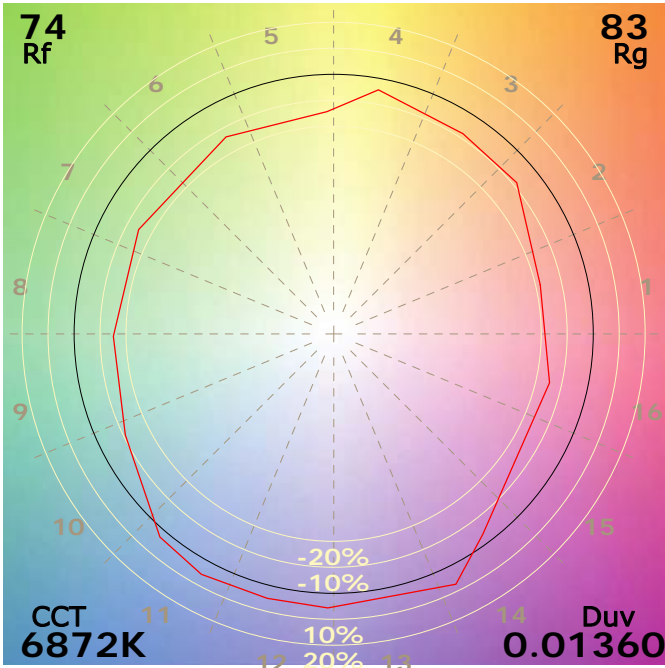
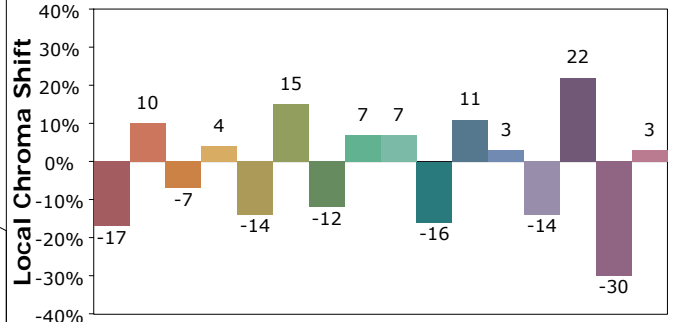
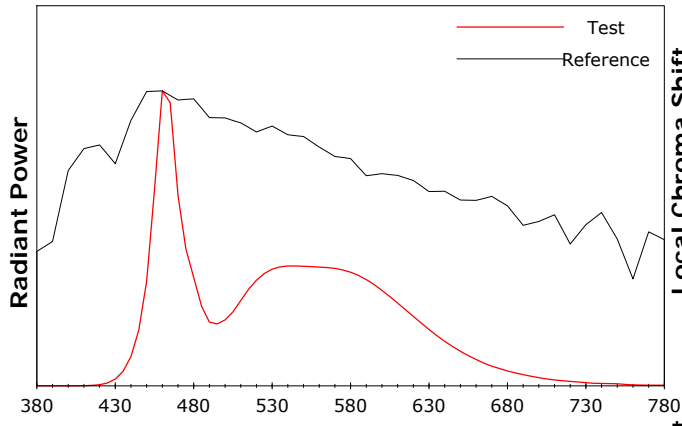
Inspector:

Product Information IES TM-30-18 Color Rendition Report

Product Spec: 长剑二代透镜2头-6500K-8AH-感应

Product Number: 4

Buyer:



Condition: Tx:26.6'C, Ti:24.4'C, R.H.:60%

Test Lab:

Operator:

Test Device: CMS-2S (Plus)

Test Time: 2026-01-10 21:35:41

Inspector: