

Lightsource Test Report

Product Infomation

Product Type: 5.7
Product Number: 1

Product Spec: 长剑一代5头-6500K-20AH
Buyer:

CIE Colorimetric Parameters

Chromaticity coordinates: $x=0.3153$ $y=0.3376$ $u(u')=0.1964$ $v=0.3155$ $v'=0.4732$
 CCT: $T_c=6314K$ ($duv=0.00625$) Color Ratio: $R=0.121$ $G=0.840$ $B=0.038$
 Peak Wavelength: 448.3nm Half Bandwidth: 16.5nm
 Dominant Wavelength: 494.8nm Color Purity: 0.058
 Central Wave: 448.2nm Gravity Wave: 448.1nm
 CRI: $R_a=72.7$ TM30: $R_f=74$, $R_g=94$

GAI: $GAI_BB_8=86.3$, $GAI_BB_15=92.4$, $GAI_EES=83.5$

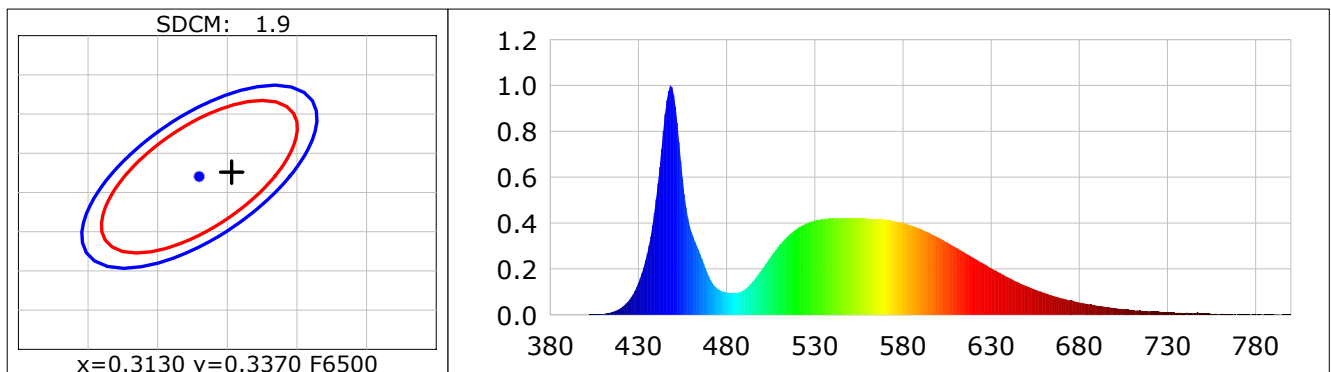
$R1=70$ $R2=76$ $R3=80$ $R4=74$ $R5=72$ $R6=68$ $R7=82$ $R8=60$

$R9=-33$ $R10=43$ $R11=72$ $R12=42$ $R13=71$ $R14=89$ $R15=64$

Color Quality Scale: $Q_a=72.8$, $Q_f=72.1$, $Q_p=75.1$, $Q_g=89.0$

$Q1=81$ $Q2=94$ $Q3=66$ $Q4=61$ $Q5=71$ $Q6=74$ $Q7=78$ $Q8=86$

$Q9=92$ $Q10=75$ $Q11=71$ $Q12=72$ $Q13=73$ $Q14=58$ $Q15=67$



Photometric Parameters

Luminous Flux: 2496.0 lm Efficiency: 0.00 lm/W Radiant Power: 7.559 W
 Total mains efficacy: 0.00 lm/W Energy Efficiency Class: G (EU 2019/2015)
 Auxiliary lamp correction factor: 1.00

Electric Parameters

Voltage: 220.30V Current: 0.0000A Power: 0.00W
 Power Factor: 0.0000 Frequency: 49.99Hz

Test Infomation

Scan Range: 380~800:1nm
 Stabilization Time: 0 Sec ALC.: 1.0000
 Max of Signal: 45446 (3145)

Photometric Method: sphere-spectroradiometer
 Photometric Condition: Sphere diameter: 2.00m, 4T
 CCD Integration Time: 84.06 ms

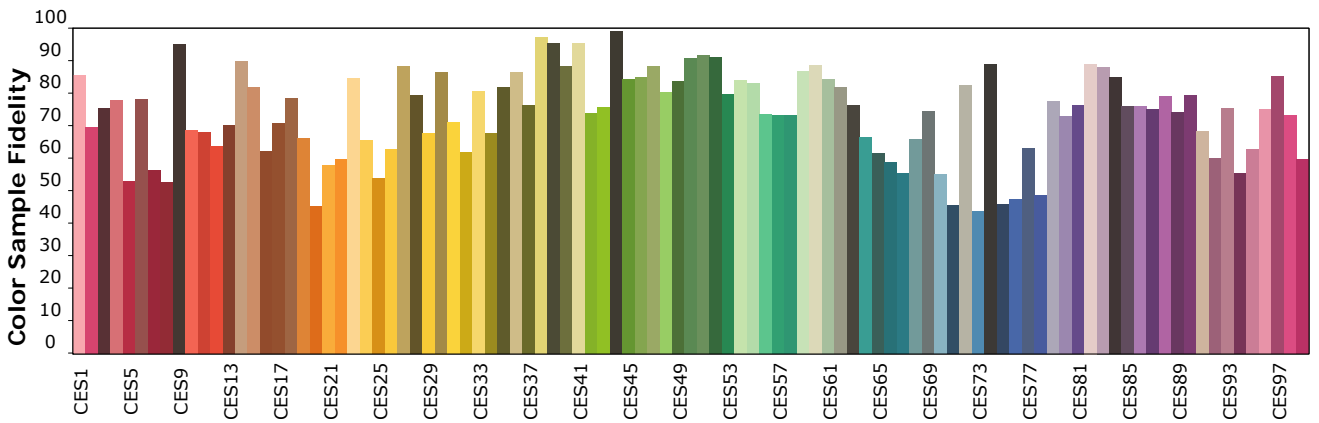
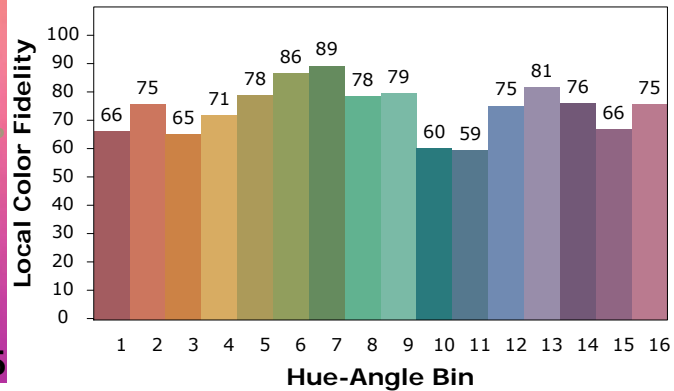
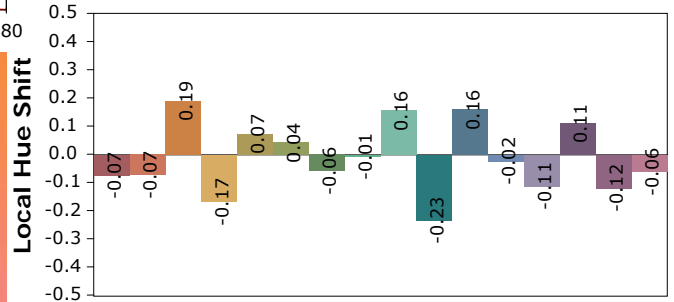
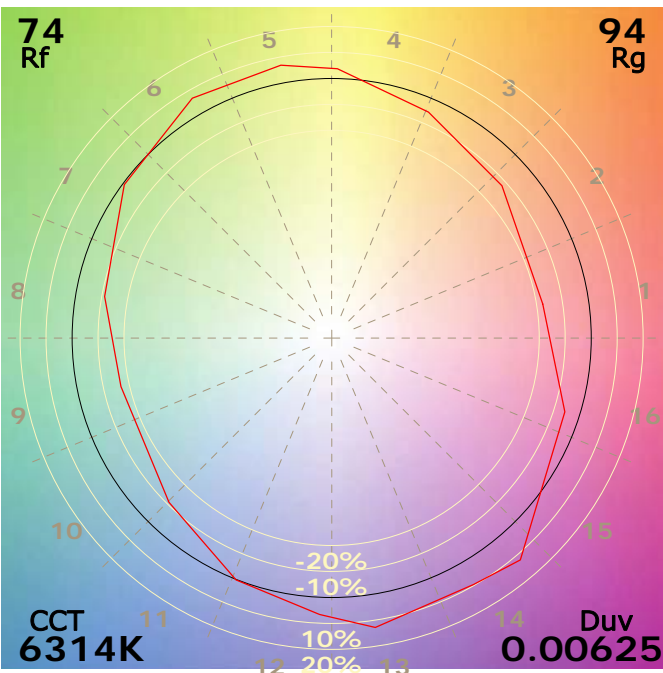
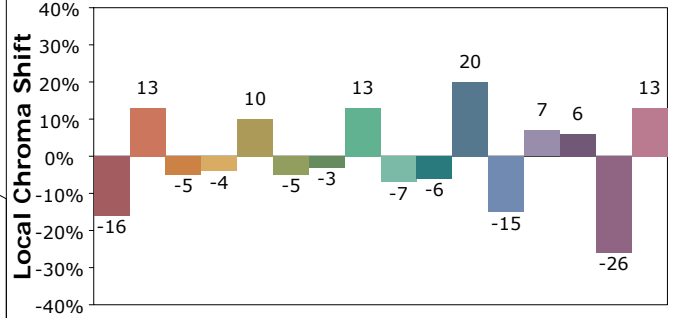
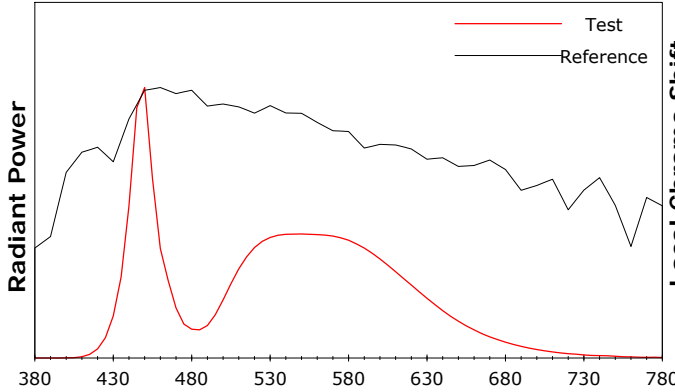
Condition: $T_x=26.6^{\circ}C$, $T_i=24.6^{\circ}C$, R.H.:60%
 Test Lab:
 Operator:

Test Device: CMS-2S (Plus)
 Test Time: 2026-01-10 19:08:41
 Inspector:

Product Information IES TM-30-18 Color Rendition Report

Product Type: 5.7
Product Number: 1

Product Spec: 长剑一代5头-6500K-20AH
Buyer:



Condition: Tx:26.6'C, Ti:24.6'C, R.H.:60%
Test Lab:
Operator:

Test Device: CMS-2S (Plus)
Test Time: 2026-01-10 19:08:41
Inspector: