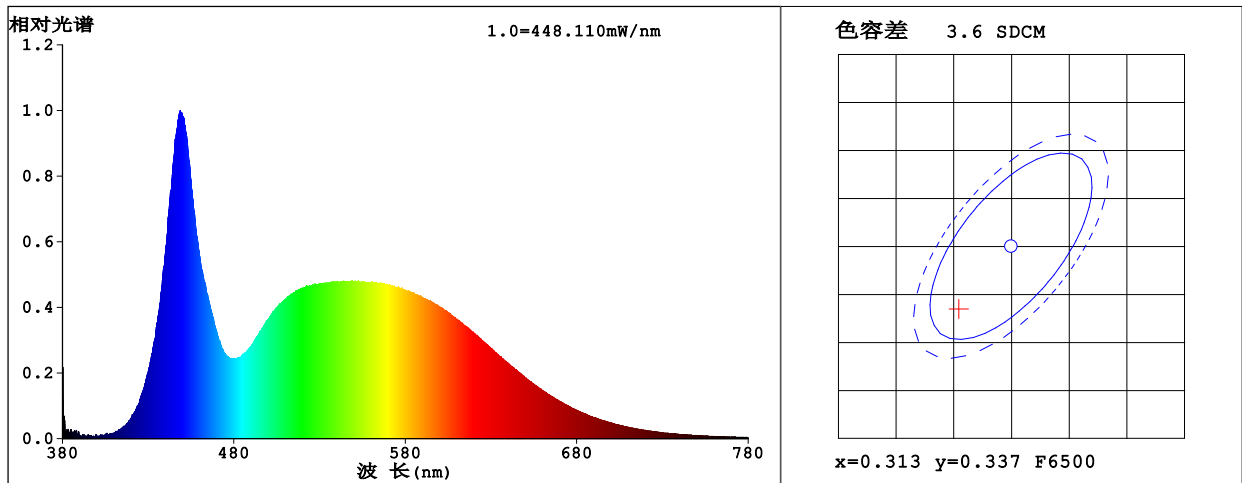


光源光谱测试报告



颜色参数:

色品坐标: $x=0.3085$ $y=0.3305$ / $u'=0.1943$ $v'=0.4685$

相关色温: CCT=6723K (色差 $D_{uv}=0.0061$) 主波长: $\lambda_d=490.2\text{nm}$ 色纯度: Purity=8.6%

色比: R=12.9% G=81.5% B=5.6% 峰值波长: $\lambda_p=448.7\text{nm}$ 半峰带宽: FWHM=23.2nm

显色指数: Ra=82.5 AvgR = 75.1 TM30: Rf=82 Rg=94

R1 =80 R2 =86 R3 =90 R4 =83 R5 =82 R6 =81 R7 =89

R8 =71 R9 =6 R10=66 R11=82 R12=60 R13=81 R14=95 R15=75

光度参数:

光通量 $\Phi = 13901\text{ lm}$ 光效: 114.95 lm/W 辐射通量 $\Phi_e = 45.27\text{ W}$

暗视觉: 31599 S/P: 2.2732

光合辐射参数: 光合光子通量: 199.02 $\mu\text{mol/s}$ 光合辐通量: 44542mW (400-700nm)

电参数:

电压 $V = 219.77\text{ V}$ 电流 $I = 0.5705\text{ A}$ 功率 $P = 120.9\text{ W}$ 功率因数 PF = 0.9644

分级: OUT 白光分类: ANSI_6500K

仪器状态: 积分时间 $T = 37\text{ ms}$ $I_p = 49304 (75\%)$

产品型号: AX-JG-D-120W

测试人员: DAMIN

环境温度: 25.3°C

制造厂商:

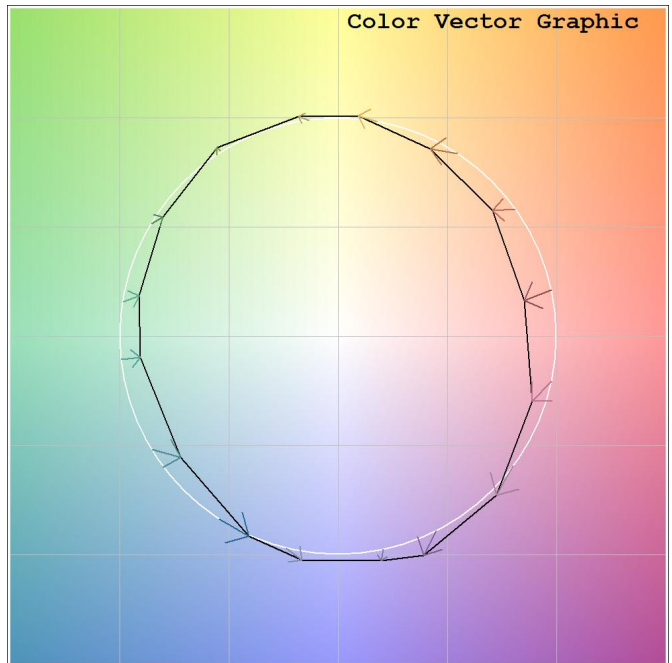
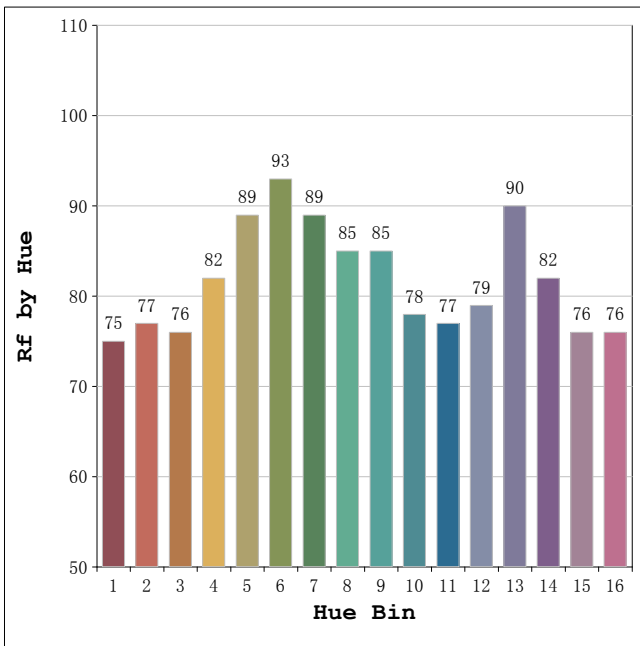
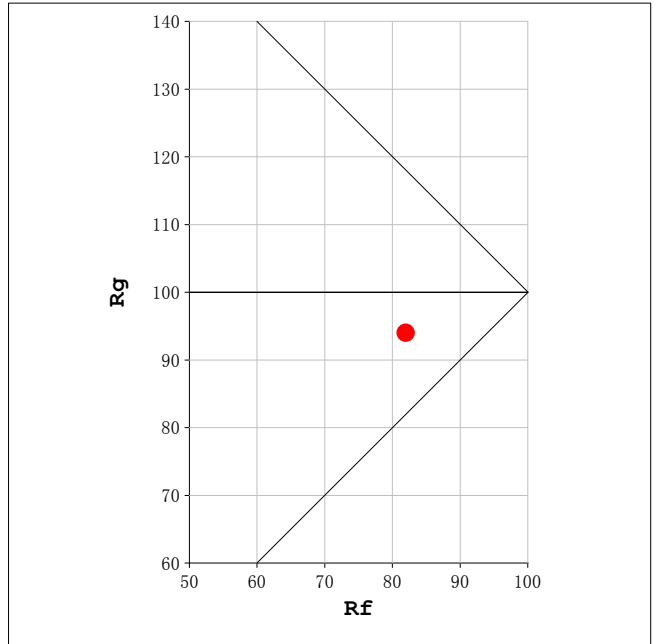
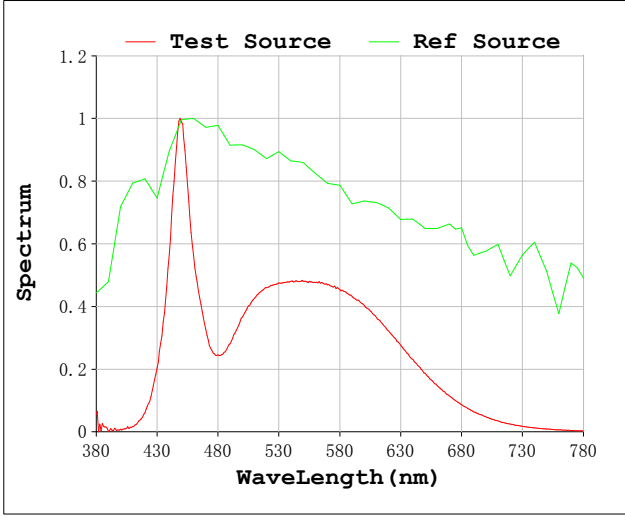
产品编号: AX-JG-D-120W1

测试日期: 2025-01-19

环境湿度: 65.0%

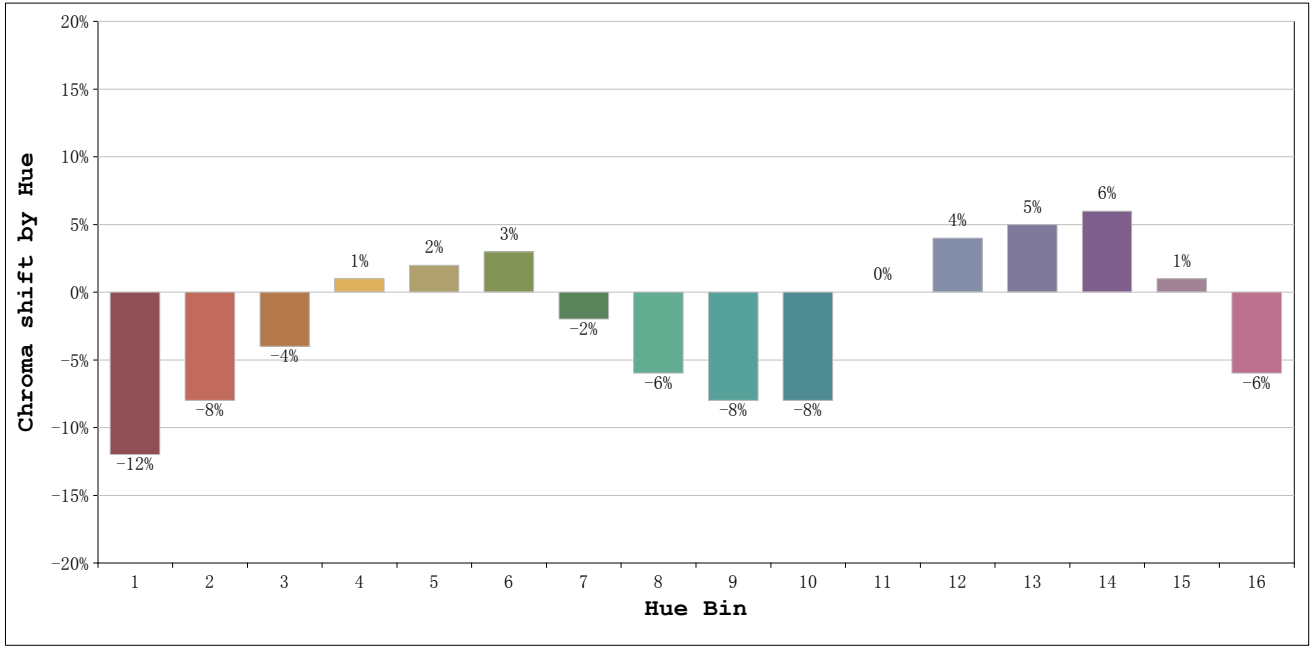
备注:

Rf: 82 CCT: 6723 K u': 0.1943
 Rg: 94 Duv: 0.0061 v': 0.4685



产品型号: AX-JG-D-120W
 测试人员: DAMIN
 环境温度: 25.3°C
 制造厂商:

产品编号: AX-JG-D-120W1
 测试日期: 2025-01-19
 环境湿度: 65.0%
 备 注:



Hue Bin	Hue Angle	Rf	Graphic shift (%)	
			Chroma	Hue
1	0.0° - 22.5°	75	-12	-1
2	22.5° - 45.0°	77	-8	5
3	45.0° - 67.5°	76	-4	12
4	67.5° - 90.0°	82	1	9
5	90.0° - 112.5°	89	2	4
6	112.5° - 135.0°	93	3	-1
7	135.0° - 157.5°	89	-2	-4
8	157.5° - 180.0°	85	-6	-3
9	180.0° - 202.5°	85	-8	1
10	202.5° - 225.0°	78	-8	10
11	225.0° - 247.5°	77	0	16
12	247.5° - 270.0°	79	4	8
13	270.0° - 292.5°	90	5	-1
14	292.5° - 315.0°	82	6	-10
15	315.0° - 337.5°	76	1	-14
16	337.5° - 360.0°	76	-6	-10

产品型号: AX-JG-D-120W
 测试人员: DAMIN
 环境温度: 25.3℃
 制造厂商:

产品编号: AX-JG-D-120W1
 测试日期: 2025-01-19
 环境湿度: 65.0%
 备注: