

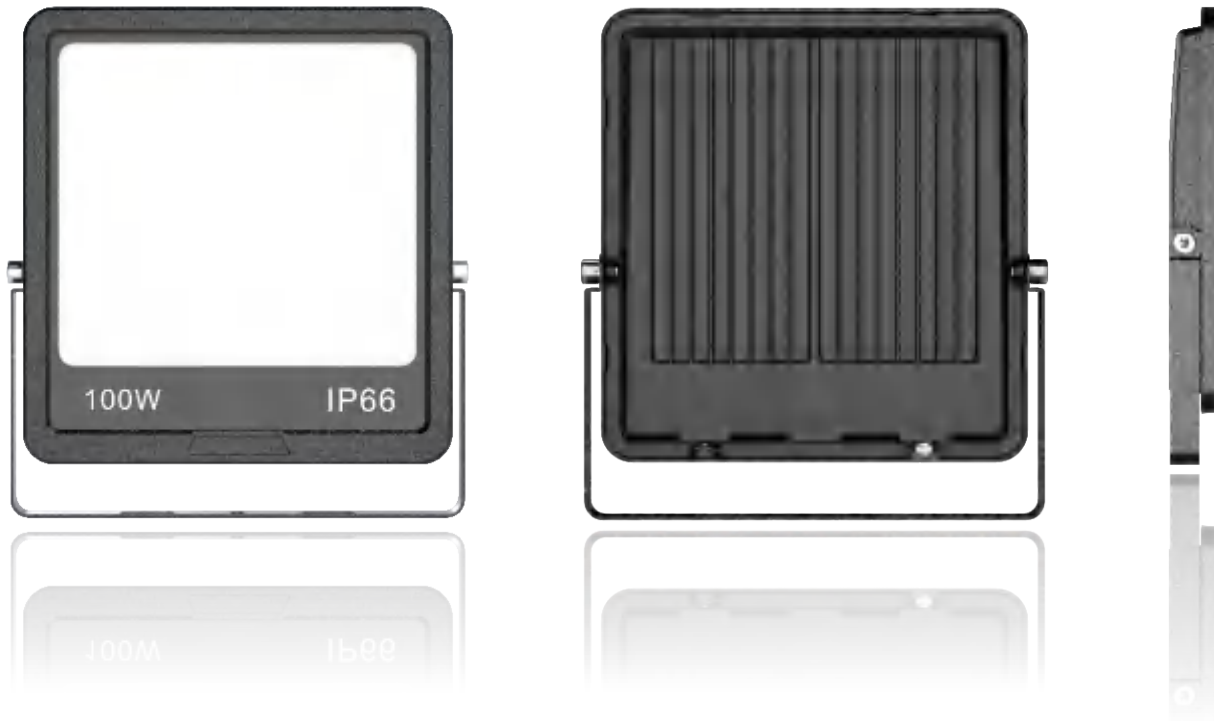


**LED FLOOD LIGHT**  
**GOLD BULL SERIES**

IP66

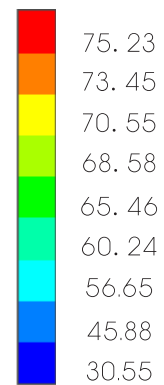
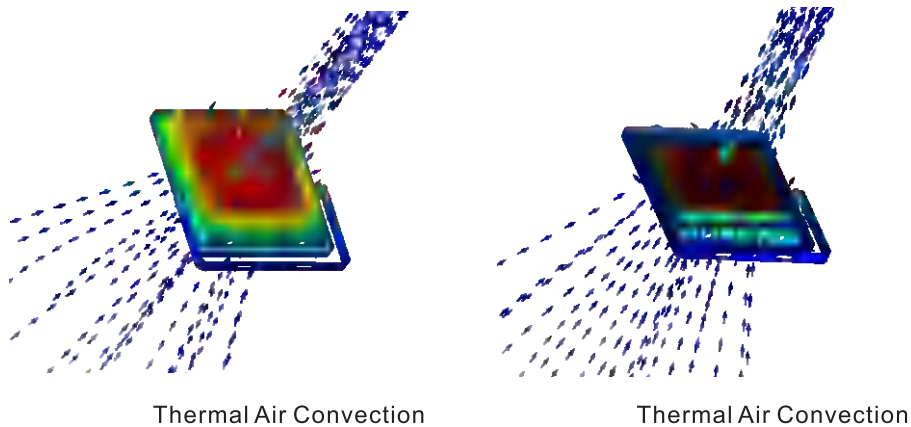
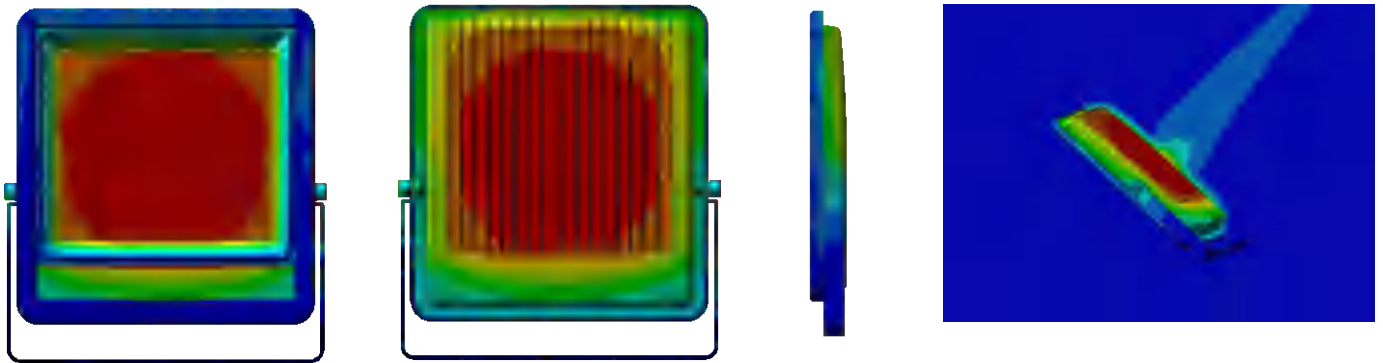


# OVERVIEW



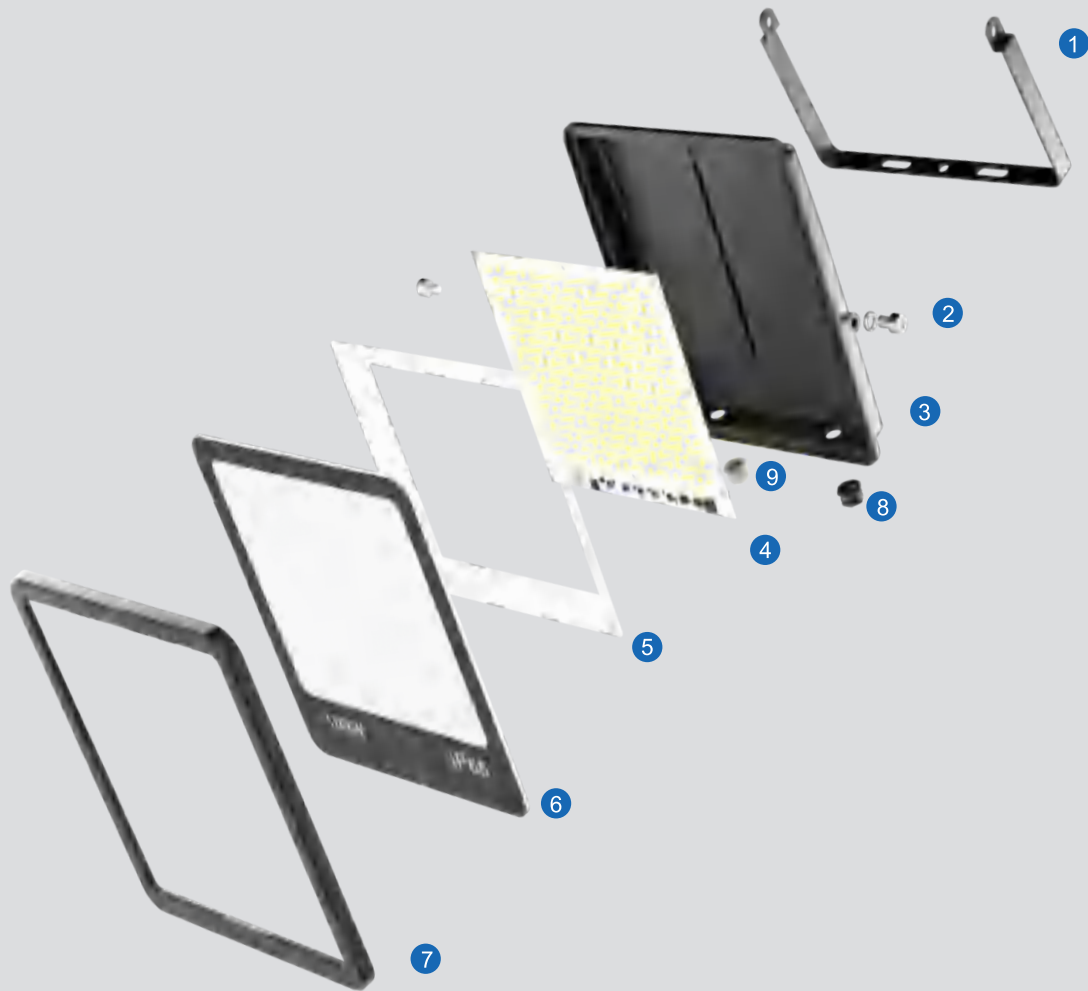
## THERMAL MANAGEMENT

Use advanced FEA technology to optimize product heat dissipation structure design. The temperature rise of the lamp is well controlled, the temperature difference between the inside and outside is small, the heat spreads evenly, and the luminous flux maintenance rate is high.



Unit: °C

## EXPLODED



① High strength iron bracket.

② 304 Stainless steel screws.

③ ADC12 Die-casting aluminum housing,  
Thermal efficiency 96W/M.K

④ High lumen 2835SMD linear light source

⑤ Nano-PC reflector

⑥ Tempered glass cover

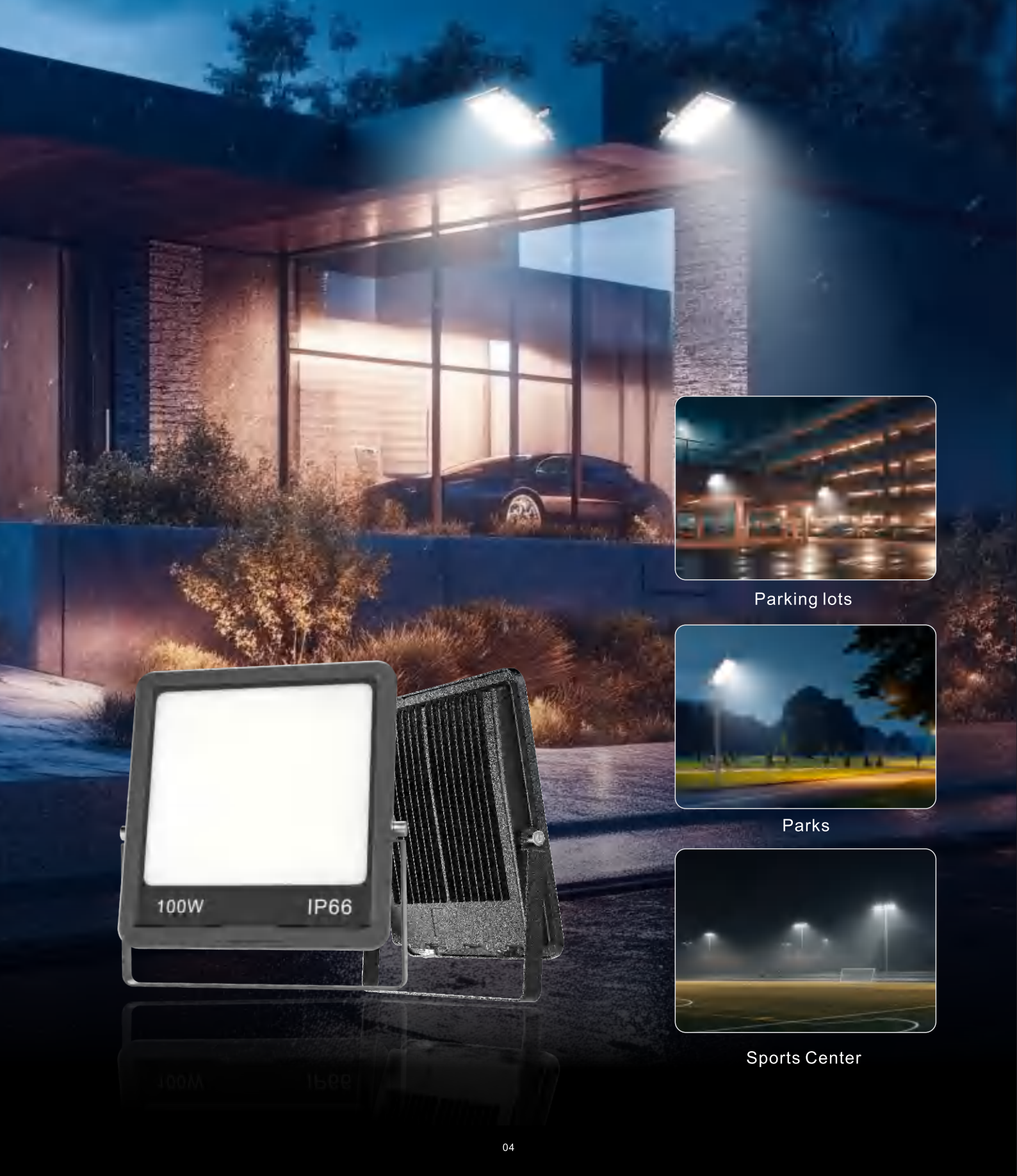
⑦ ABS Frame

⑧ Thermal respirator

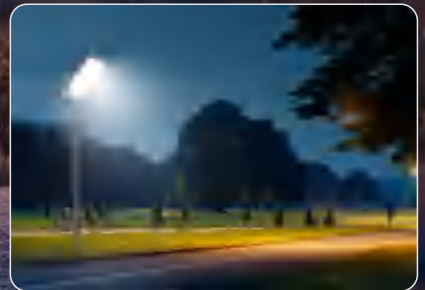
⑨ Waterproof gland

## APPLICATIONS

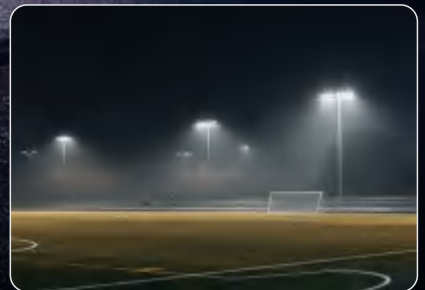
It is widely used in indoor and outdoor places, such as squares, stadiums, villas, bridge billboards, docks, building facades and parking lots, etc.



Parking lots



Parks



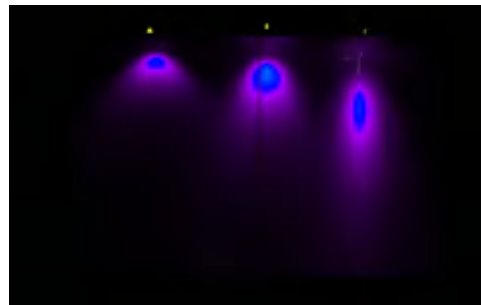
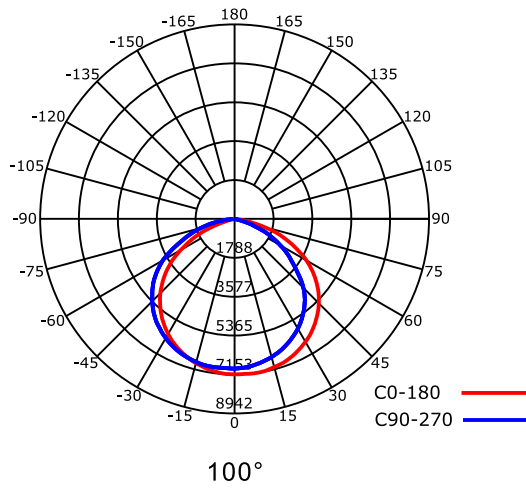
Sports Center



## OPTICS

Tech. Support:

Provide the length, width, height and other parameters of the space, and tell us the purpose of the space, and we can conduct a professional DIALUX lighting simulation for you. Pre-evaluate the installation quantity and lighting effects of lamps for your project. Our company has complete files documents for each lamp, welcome to request.



## INSTALLATION METHODS



Floor Installation



Surface Mounted Installation



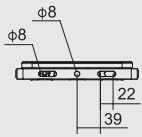
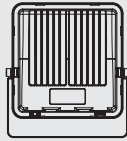
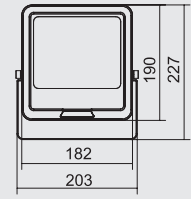
Wall Mounted Installation



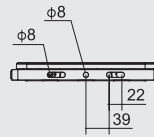
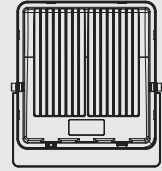
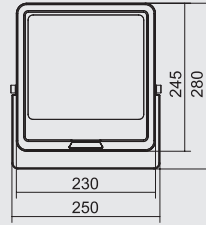
Pole Mounted Installation

# DIAGRAMS

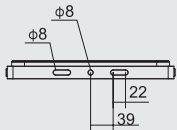
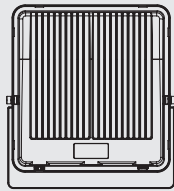
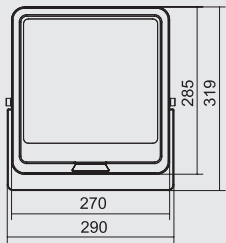
Unit:mm



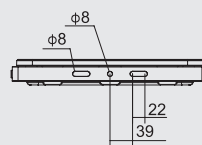
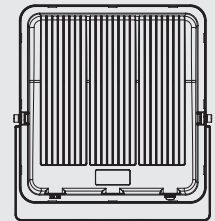
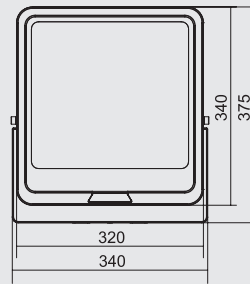
50W



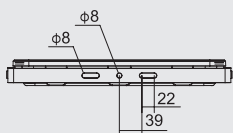
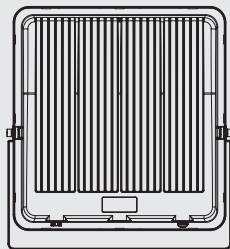
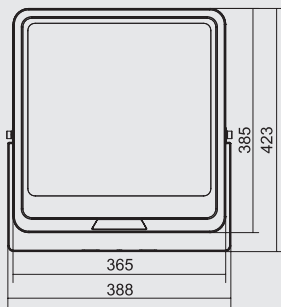
100W



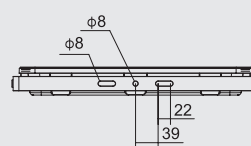
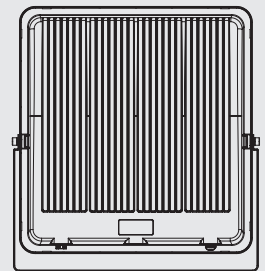
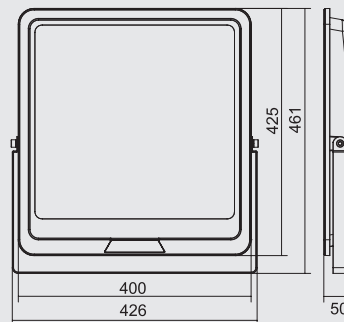
150W



200W

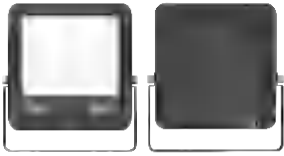


300W



400W

## SPECIFICATIONS



50W



100W



150W



200W



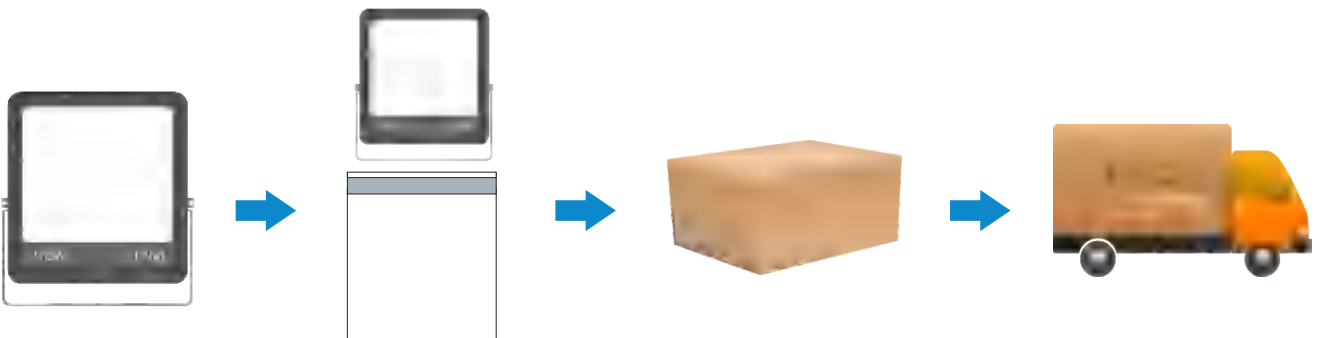
300W



400W

Models	Powers	Housings Weight (g)	Body Sizes (mm)	Inner Box Sizes (mm)	IP	Light Sources	Beam Angle	Ra
Gold Bull	50W	580	182*190*30	210*200*35	IP66	SMD2835	100°	>80
	100W	930	230*245*30	260*255*35	IP66	SMD2835	100°	>80
	150W	1220	270*285*30	300*295*35	IP66	SMD2835	100°	>80
	200W	1680	320*340*40	360*350*45	IP66	SMD2835	100°	>80
	300W	2320	365*385*45	400*395*50	IP66	SMD2835	100°	>80
	400W	3050	400*425*50	435*435*55	IP66	SMD2835	100°	>80

## PACKING





## FEATURES

1. Adapt to high-end constant current LED power supply.
2. Made of ADC12 die-cast aluminum and integrated molding process. Aluminum has high heat dissipation efficiency.
3. 2835 high lumen patch light source.
4. High thermal conductivity aluminum PCB, which can quickly dissipate the heat of the lamp chip.  
Maintain higher luminous flux maintenance rate of lamps.
5. IP66 outdoor structural waterproof.

## CAUTIONS

1. Installation must be completed by a professional electrician.
2. Please do not disassemble the lamp to avoid danger.
3. Do not look directly at the light source with the naked eye, as it may cause damage to your vision.
4. When installing outdoors, the thread ends need to be waterproofed.

