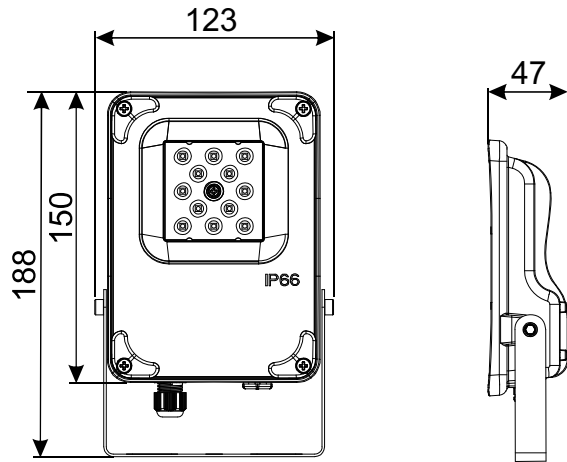


3rd Generation Floodlight Series Kit

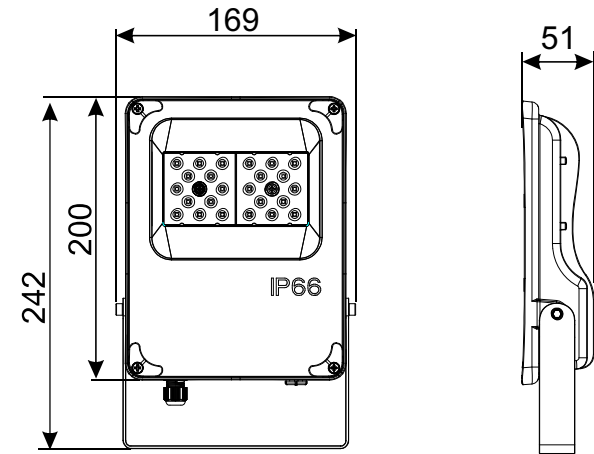
- Power: 10 - 350W
- Patented custom mold, integrated aluminum alloy die-casting
- Professional anti-glare lenses: 7° / 30° / 15° / 60° / 90° / 120° / T2M / T3M / T4M / 30*90°
- Waterproof rating: IP66
- Compatible with RF full-color dimming
- Optional human body sensing function



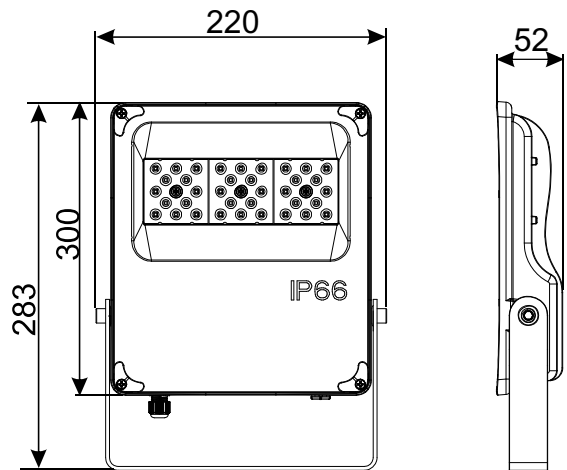
Product size



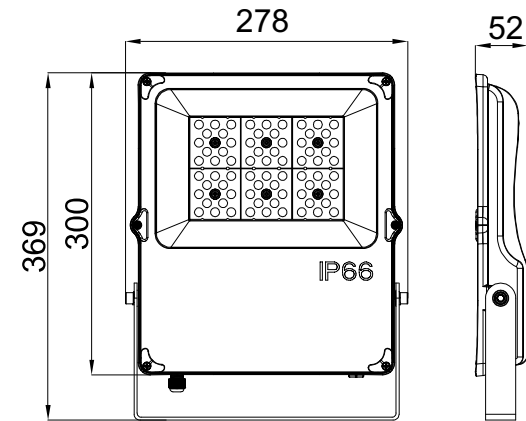
10W(10W)



30W(20-30W)



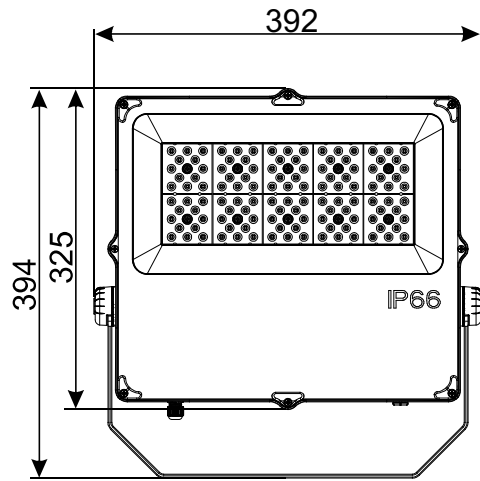
50W(30-50W)



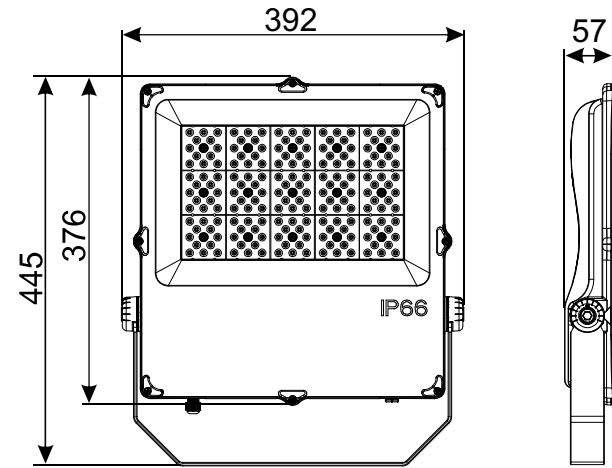
100W(50-100W)

Unit: mm

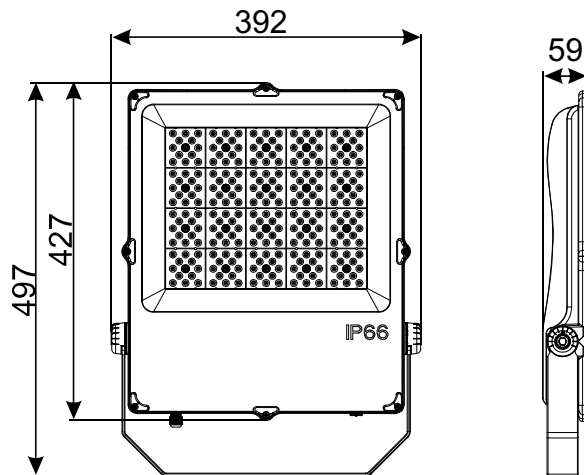
Product size



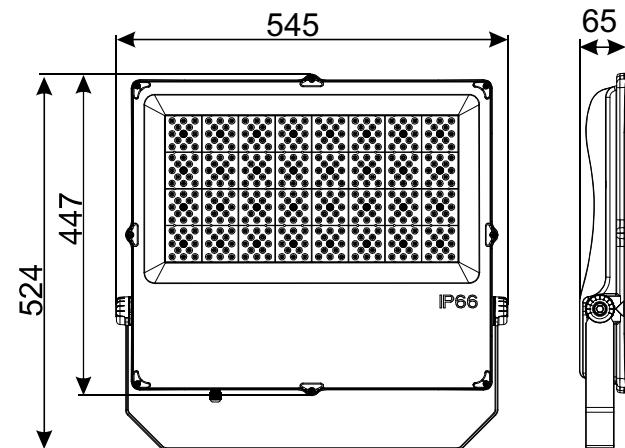
150W(100-150W)



200W(150-200W)



250W(200-240W)



350W(300-350W)

Unit: mm

Specification parameters

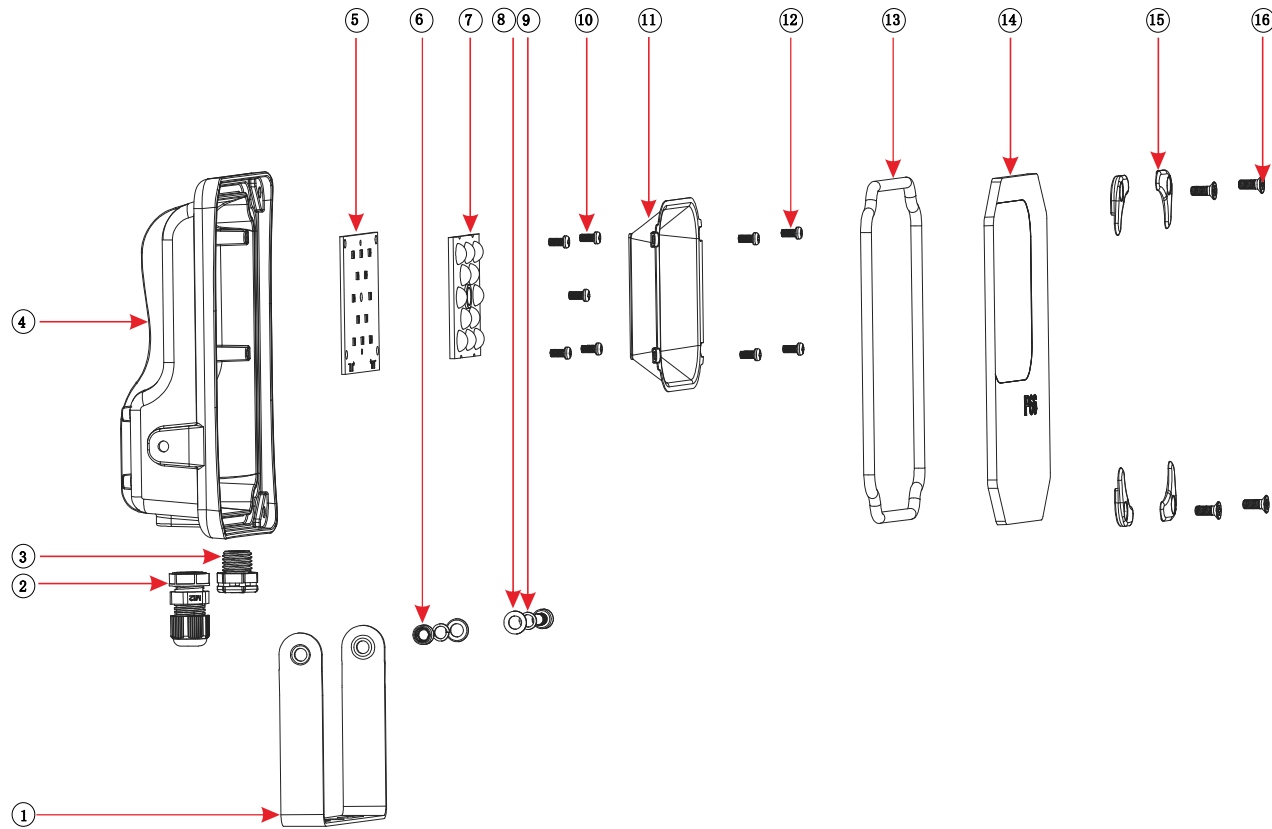
Product model		PTG001-10W	PTG001-30W	PTG001-50W	PTG001-100W
Number of lenses		1	2	3	6
Size specification		188*123*47mm	242*169*51mm	283*220*52mm	369*278*52mm
Power range		10W	20-30W	30-50W	50-100W
Light source type	Lumi leds 3030/3535				
Number of light sources	4-in-1 lens	4pcs	8pcs	12pcs	24pcs
	12-in-1 lens	12pcs	24pcs	36pcs	72pcs
	16-in-1 lens	16pcs	32pcs	48pcs	96pcs
	24-in-1 lens	24pcs	48pcs	72pcs	144pcs
Parallel connection method	4-in-1 lens	4 strings in parallel	8 strings in parallel	12 series in parallel	12 in 2 parallel
	12-in-1 lens	6 strings in parallel 2	6 strings in parallel 4	6 series in parallel with 6	6 in 12 parallel
	16-in-1 lens	4 strings in parallel 4	8 strings in parallel 4	6 series in parallel with 8	6 in 16 parallel
	24-in-1 lens	6 strings in parallel 4	6 strings in parallel 8	6 series in parallel with 12	6 in 24 parallel
Adaptive driver	Mingwei / Songsheng				
Lens angle	7°/15°/30°/60°/90°/120 °/ T2M/T3M/T4M/30*90°				
Kit weight		0.43kg	0.85kg	1.3kg	2kg

Specification parameters

Product model	PTG001-150W	PTG001-200W	PTG001-250W	PTG001-350W
Number of lenses	10	15	20	32
Size specifications	394*392*57mm	445*392*57mm	497*392*59mm	524*545*65mm
Power range	100-150W	150-200W	200-240W	300-350W
Light source type	Lumi leds 3030/3535			
Number of light sources	4-in-1 lens			128pcs
	12-in-1 lens	120pcs	180pcs	240pcs
	16-in-1 lens	160pcs	240pcs	320pcs
	24-in-1 lens	240pcs	360pcs	480pcs
Series-parallel configuration	4-in-1 lens			16 in 8 parallel
	12-in-1 lens	6 in 20 parallel	6 in 30 parallel	6 in 40 parallel
	16-in-1 lens	8 in 20 parallel	8 in 30 parallel	8 in 40 parallel
	24-in-1 lens	8 in 30 parallel	8 in 45 parallel	8 in 60 parallel
Adaptive driver	Mingwei / Songsheng			
Lens angle	7°/15°/30°/60°/90°/120 °/T2M/T3M/T4M/30*90°			
Kit weight	3.7kg	4.2kg	5kg	7.5kg

Bill of Materials

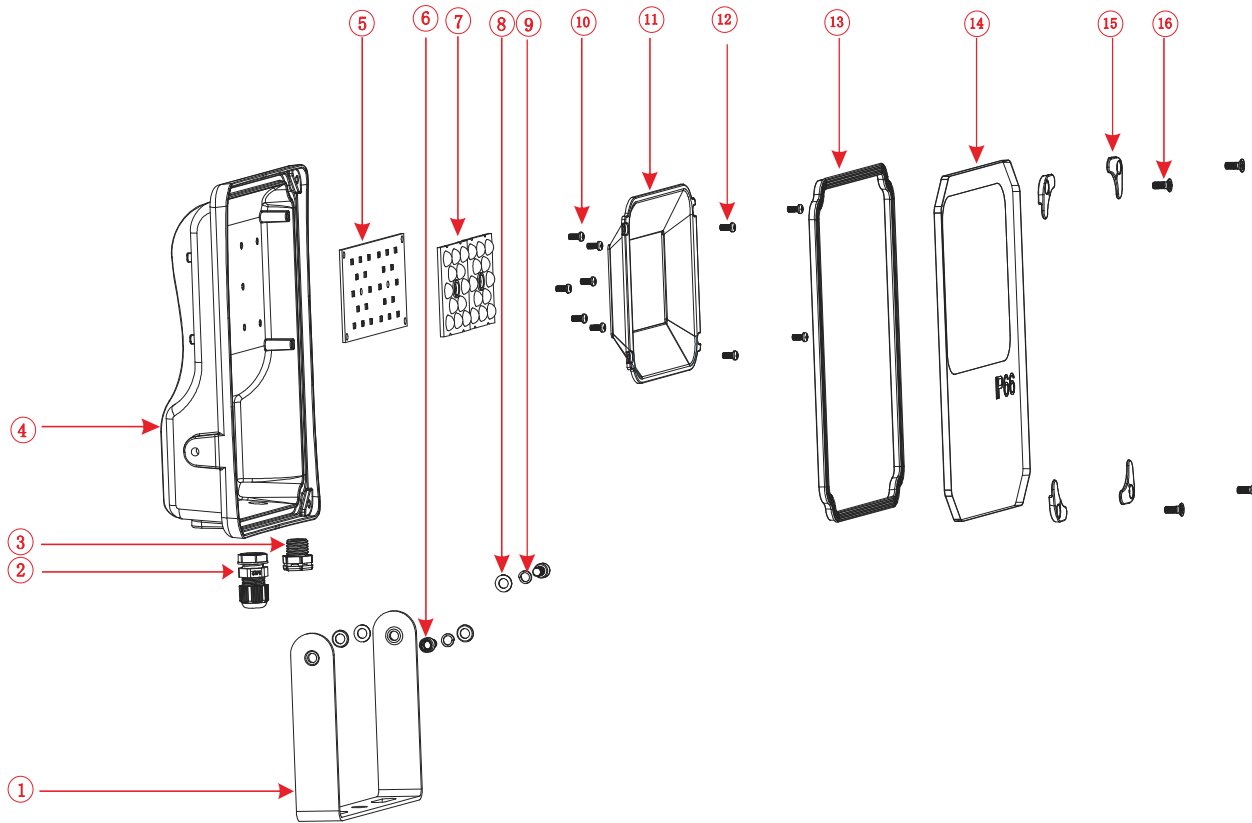
10W



Serial Number	Specification	Quantity
1	Installation bracket	1
2	PG9 waterproof head	1
3	M12 respirator	1
4	Heat dissipation main body	1
5	PCB board	1
6	M5-10/ hex socket machine tap screws	2
7	Lens	1
8	M5/ flat washer	2
9	M5/ spring washer	2
10	M3-6/ round head machine screw	5
11	PC reflective cup	1
12	M3-6/ round head machine screw	4
13	Foam rubber gasket	1
14	Tempered glass	6
15	Waterproof pressing plate	4
16	M4-5/ flat head machine screw	4

Bill of Materials

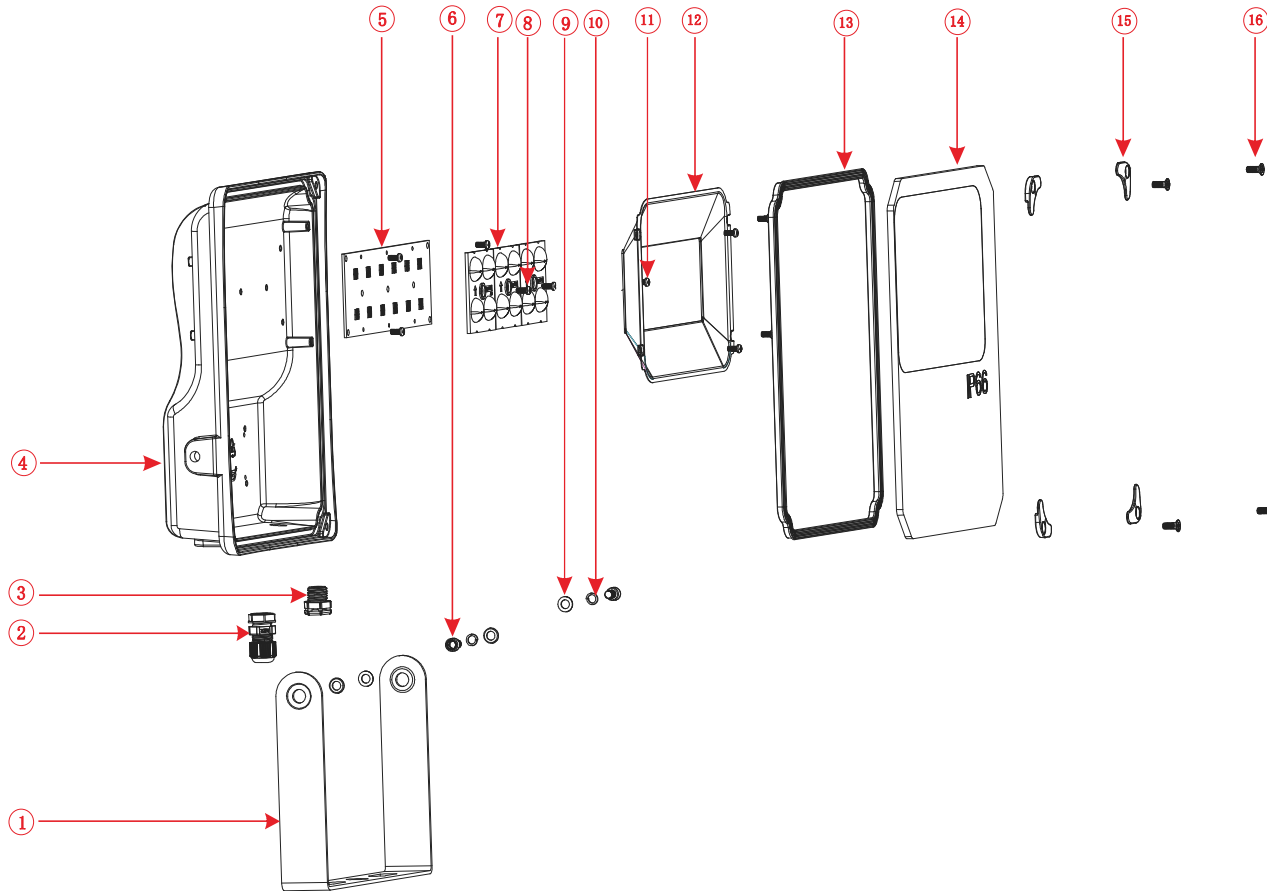
30W



Serial Number	Specification	Quantity
1	Installation bracket	1
2	PG9 waterproof head	1
3	M12 respirator	1
4	Heat dissipation main body	1
5	PCB board	1
6	M5-10/ hex socket machine tap screws	2
7	Lens	2
8	M5/ flat washer	2
9	M5/ spring washer	2
10	M3-6/ round head machine screw	6
11	PC reflective cup	1
12	M3-6/ round head machine screw	4
13	Foam rubber gasket	1
14	Tempered glass	6
15	Waterproof pressing plate	4
16	M4-5/ flat head machine screw	4

Bill of Materials

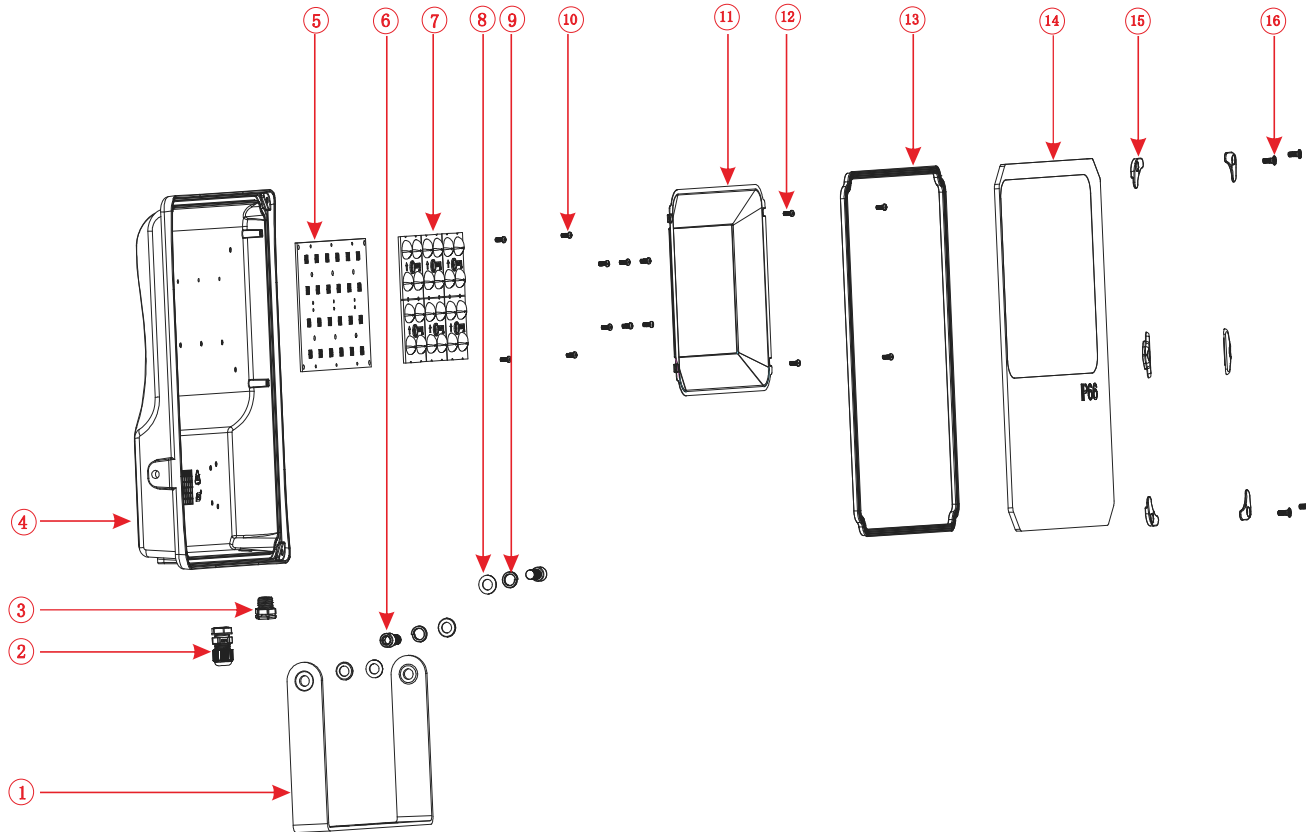
50W



Serial Number	Specification	Quantity
1	Installation bracket	1
2	PG9 waterproof head	1
3	M12 respirator	1
4	Heat dissipation main body	1
5	PCB board	1
6	M5-10/ hex socket machine tap screws	2
7	Lens	3
8	M3-6/ round head machine screw	7
9	M5/ flat washer	2
10	M5/ spring washer	2
11	M3-6/ round head machine screw	4
12	PC reflective cup	1
13	Foam rubber gasket	1
14	Tempered glass	6
15	Waterproof pressing plate	4
16	M4-5/flat-head machine wire screws	4

Bill of Materials

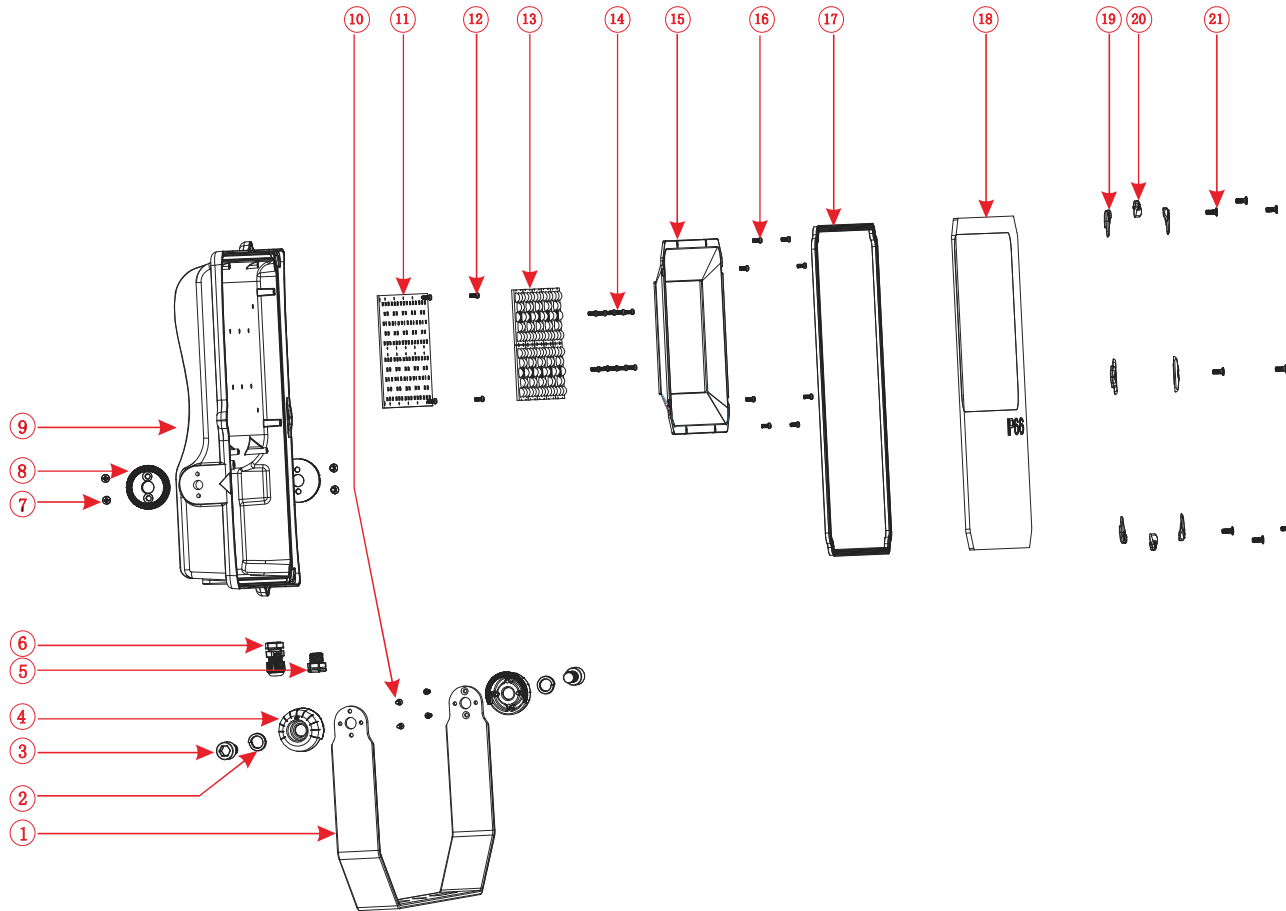
100W



Serial Number	Specification	Quantity
1	Installation bracket	1
2	PG9 waterproof head	1
3	M12 respirator	1
4	Heat dissipation main body	1
5	PCB board	1
6	M5-10/ hex socket machine tap screws	2
7	Lens	6
8	M5/ flat washer	2
9	M5/ spring washer	2
10	M3-6/ round head machine screw	4
11	PC reflective cup	1
12	M3-6/ round head machine screw	10
13	Foam rubber gasket	1
14	Tempered glass	6
15	Waterproof pressing plate	6
16	M4-5/flat-head machine wire screws	4

Bill of Materials

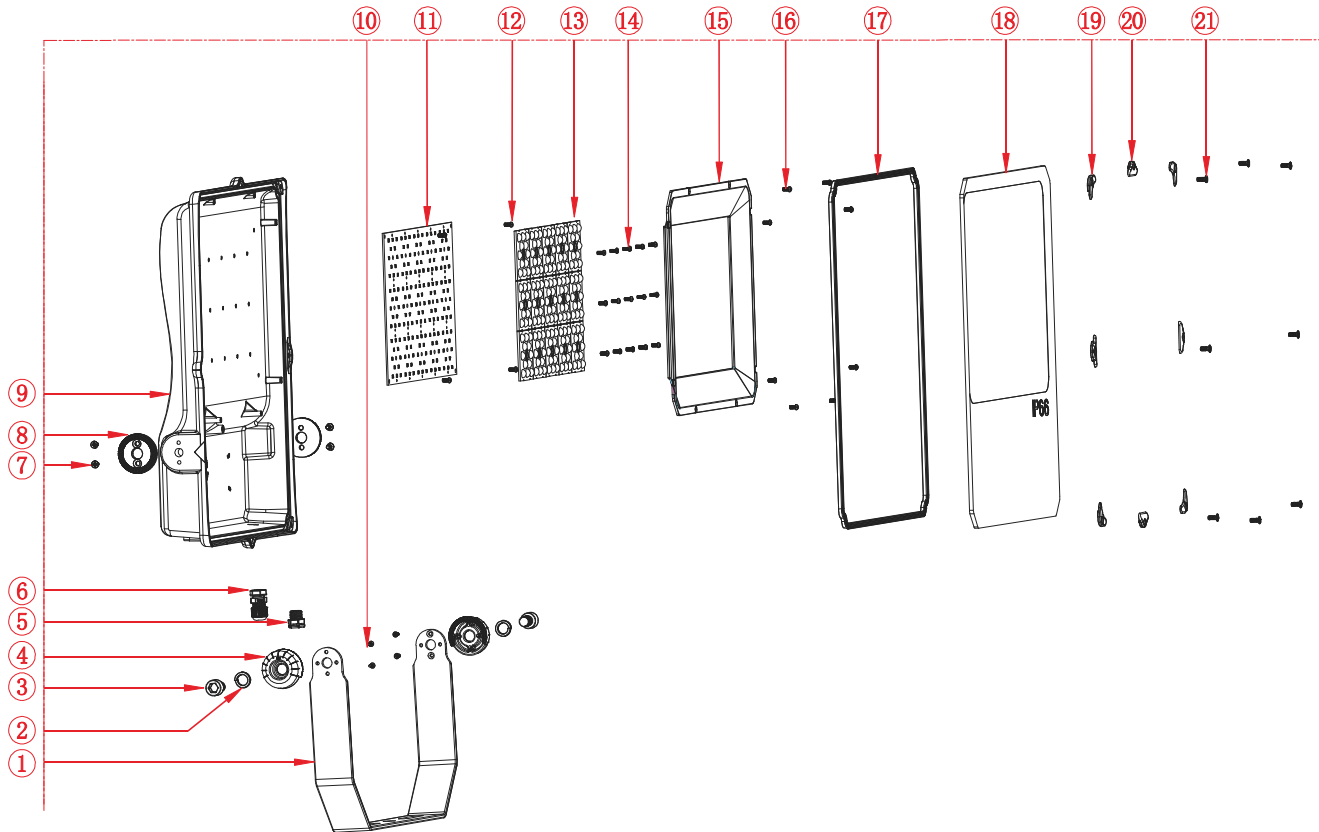
150W



Serial Number	Specification	Quantity
1	Installation bracket	1
2	M10-25/ hexagonal machine tap screw	2
3	M10/ spring washer	2
4	Rotary shaft 2	2
5	M12 respirator	1
6	Pg9 waterproof head	1
7	Heat dissipation body	1
8	Rotary shaft 1	2
9	M4-10/ flat machine screw	4
10	M3-8/ flat machine screw	4
11	PCB board	1
12	M3-5/ round machine screw	4
13	Lens	10
14	M3-5/ round machine screw	10
15	PC reflective cup	1
16	M3-5/ round machine screw	4
17	Foam rubber gasket	1
18	Tempered glass	1
19	Waterproof pressing plate 1	4
20	Waterproof pressing plate 2	4
21	M4-6/flat-head machine wire screw	8

Bill of Materials

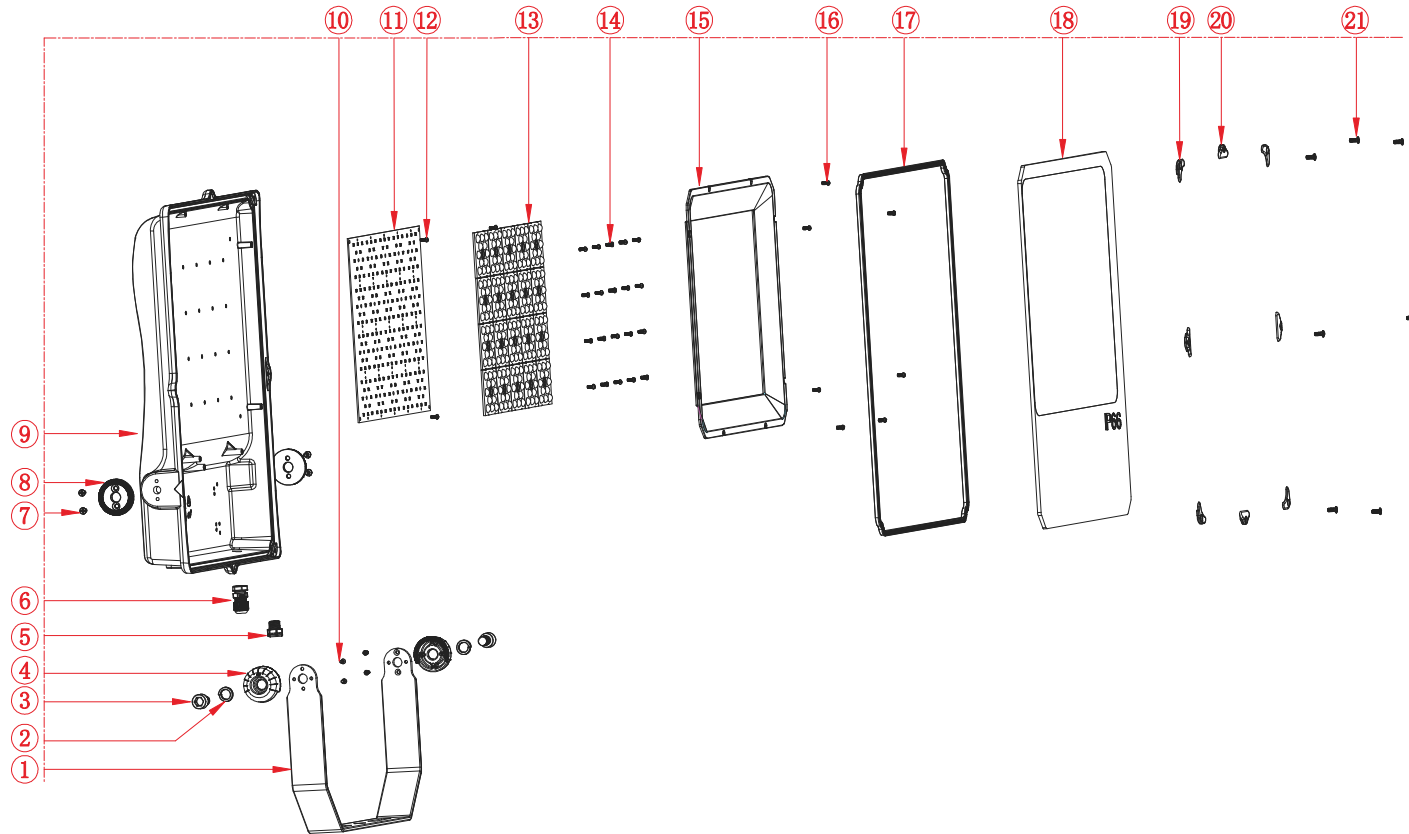
200W



Serial Number	Specification	Quantity
1	Installation bracket	1
2	M10-25/ hexagonal machine tap screw	2
3	M10/ spring washer	2
4	Rotary shaft 2	2
5	M12 respirator	1
6	Pg9 waterproof head	1
7	Heat dissipation body	1
8	Rotary shaft 1	2
9	M4-10/ flat machine screw	4
10	M3-8/ flat machine screw	4
11	PCB board	1
12	M3-5/ round machine screw	4
13	Lens	15
14	M3-5/ round machine screw	15
15	Pc reflective cup	1
16	M3-5/ round machine screw	4
17	Foam rubber gasket	1
18	Tempered glass	1
19	Waterproof pressing plate 1	4
20	Waterproof pressing plate 2	4
21	M4-6/flat-head machine wire screw	8

Bill of Materials

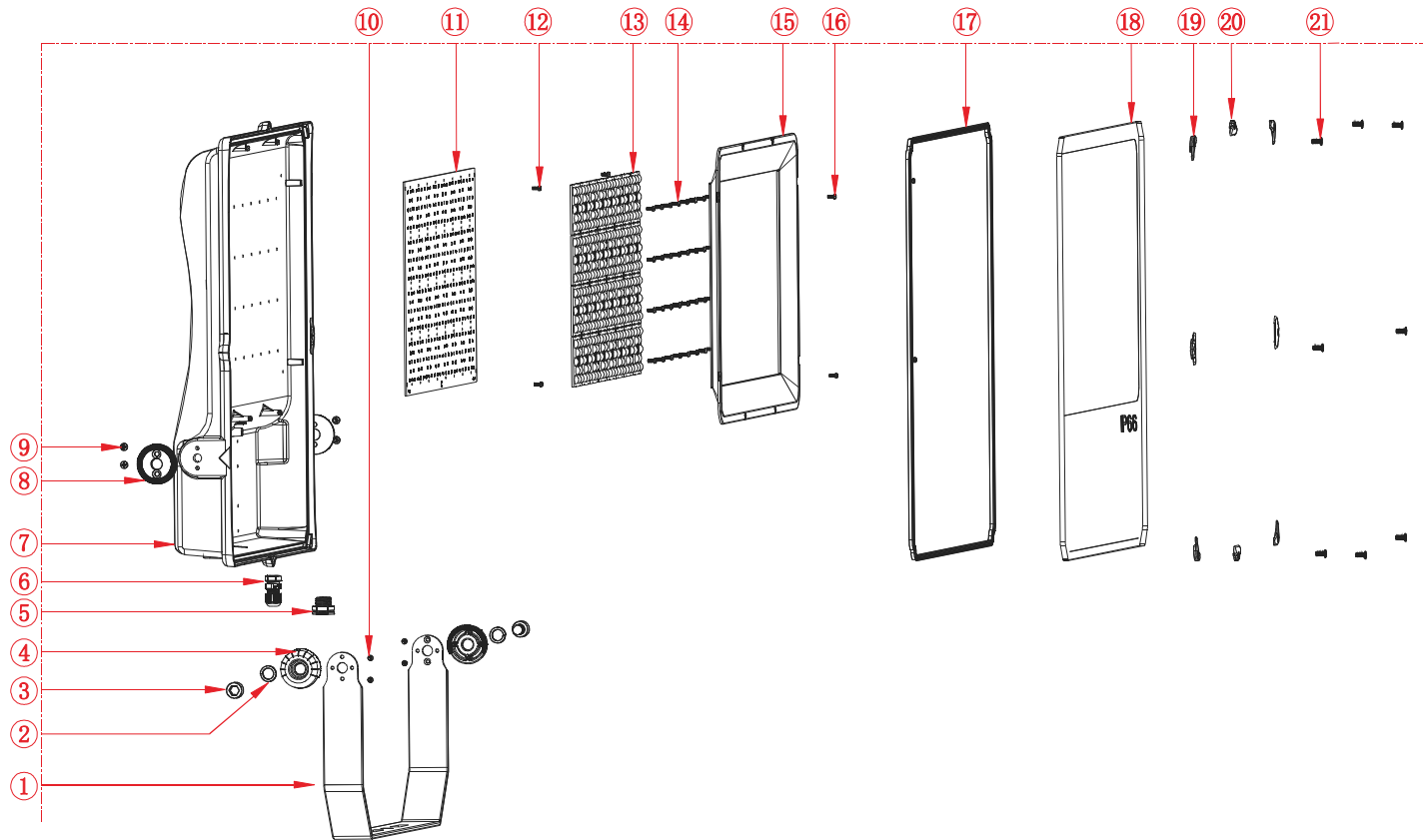
250W



21	M4-6/flat head machine screw	8
20	Waterproof gasket 2	4
19	Waterproof gasket 1	4
18	Tempered glass	1
17	Foam rubber silicone ring	1
16	M3-5/round head machine thread screw	4
15	PC reflective cup	1
14	M3-5/round head machine thread screw	20
13	Lens	20
12	M3-5/round head machine thread screw	4
11	PCB board	1
10	M3-8/flat head machine thread screw	4
9	M4-10/flat head machine thread screw	4
8	Rotary shaft 1	2
7	Heat dissipation main body	1
6	PG9 waterproof head	1
5	M12 respirator	1
4	Rotary shaft 2	2
3	M10/ spring washer	2
2	M0-25/ hexagonal machine thread screw	2
1	Installation bracket	1
Serial Number	Specification	Quantity

Bill of Materials

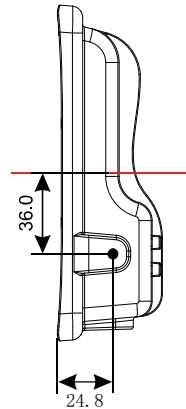
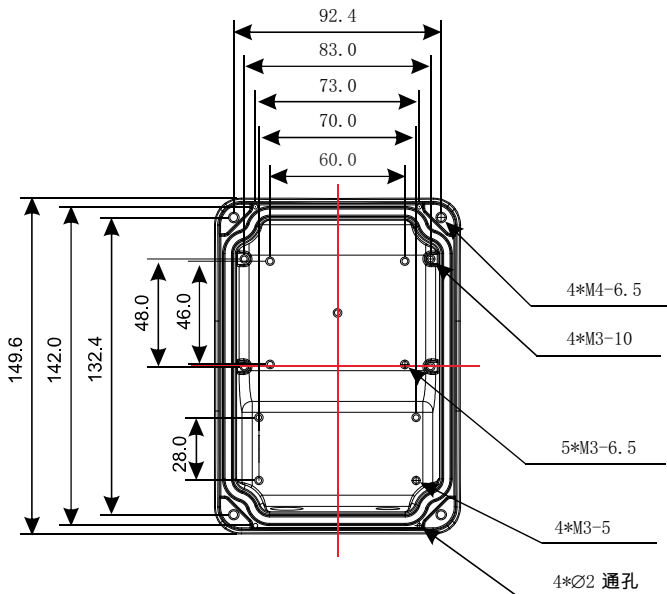
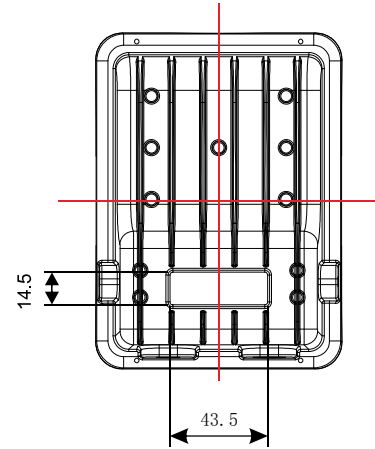
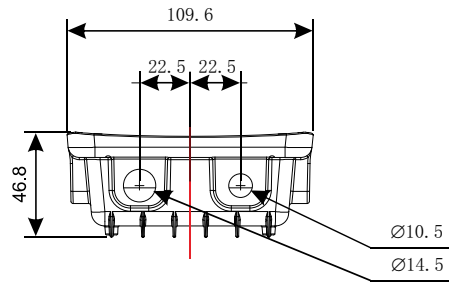
350W



Serial Number	Specification	Quantity
1	Installation bracket	1
2	M10-25/ internal hexagonal machine thread screw	2
3	M10/ spring washer	2
4	Rotary shaft 2	2
5	M12 respirator	1
6	Pg waterproof head	1
7	Heat dissipation body	1
8	Rotary shaft 1	2
9	M4-10/ flat head machine thread screw	4
10	M3-8/ flat head machine thread screw	4
11	PCB board	1
12	M3-5/ round head machine thread screw	4
13	Lens	32
14	M3-5/ round head machine thread screw	32
15	PC reflective cup	1
16	M3-5/ round head machine thread screw	4
17	Foam rubber gasket	1
18	Tempered glass	1
19	Waterproof pressing plate 1	4
20	Waterproof pressing plate 2	4
21	M4-6/flat-head machine wire screw	8

Subject

10W heat dissipation main body



Lamp body heat sink

Material: ADC12 (aluminum)

Processing method: Integral die-casting

Surface treatment: Outdoor silver powder coating

Designed with an internal mold, it features highly efficient heat dissipation performance while maintaining a lightweight structure.

Private mold, exclusive patent!

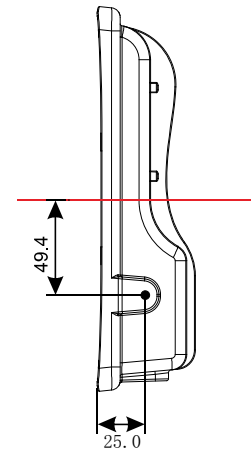
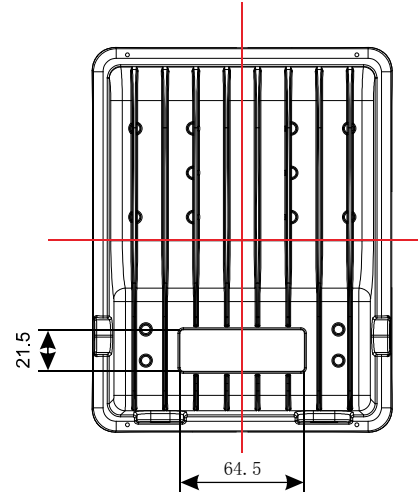
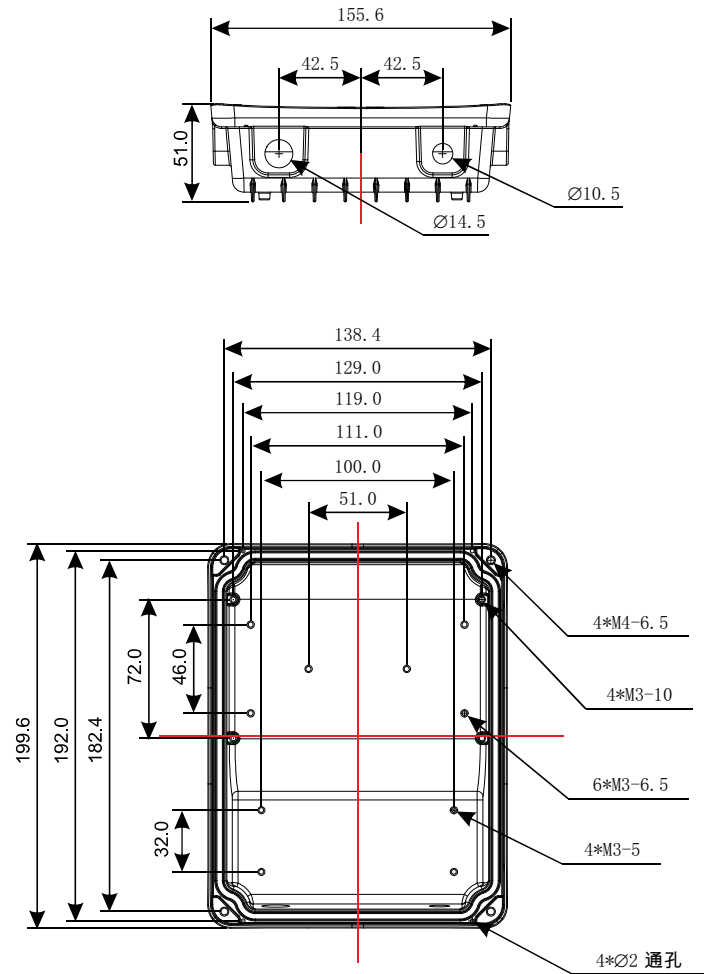
The surface undergoes an outdoor-specific silver powder coating treatment with added metal powder, enhancing the matte texture and expanding the heat dissipation area.

Exquisite and unique appearance
Outstanding heat dissipation performance

Marking unit: mm

Subject

30W heat dissipation main body



Lamp body heat sink

Material: ADC12 (aluminum)

Processing method: Integral die-casting

Surface treatment: Outdoor silver powder coating

Designed with an internal mold, it features highly efficient heat dissipation performance while maintaining a lightweight structure.

Private mold, exclusive patent!

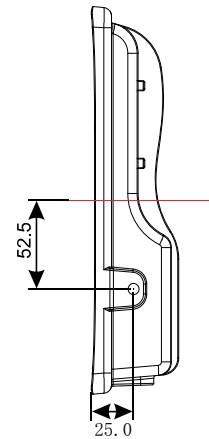
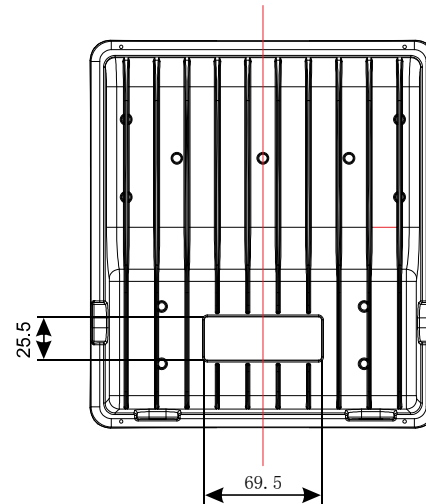
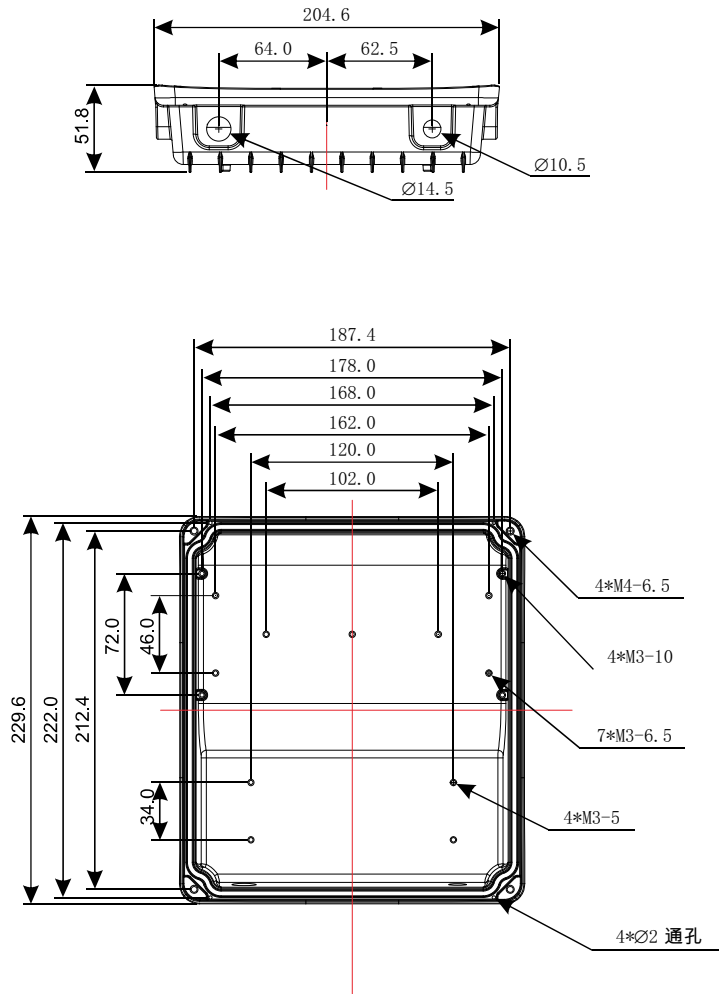
The surface undergoes an outdoor-specific silver powder coating treatment with added metal powder, enhancing the matte texture and expanding the heat dissipation area.

Exquisite and unique appearance
Outstanding heat dissipation performance

Marking unit: mm

Subject

50W heat dissipation main body



Lamp body heat sink

Material: ADC12 (aluminum)

Processing method: Integral die-casting

Surface treatment: Outdoor silver powder coating
Designed with an internal mold, it features highly efficient heat dissipation performance while maintaining a lightweight structure.

Private mold, exclusive patent!

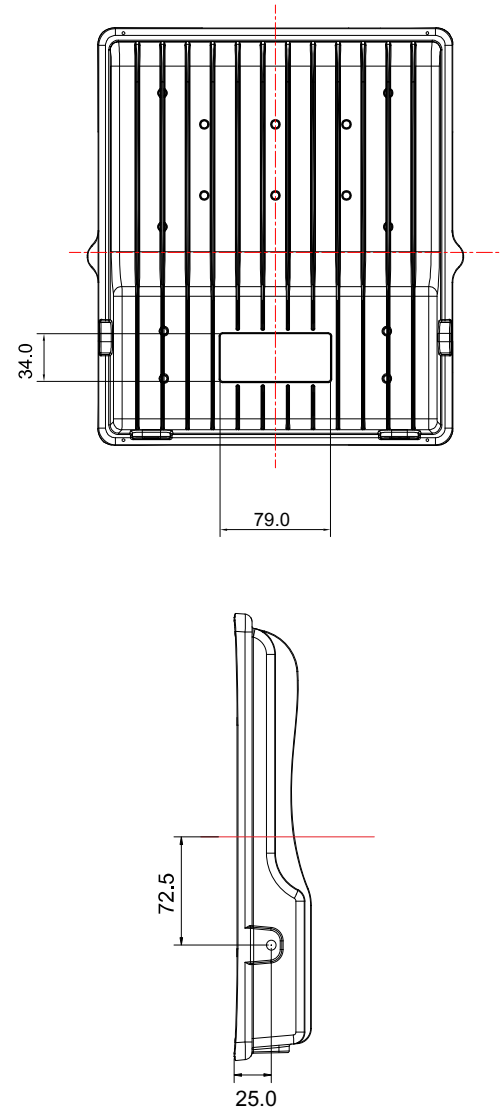
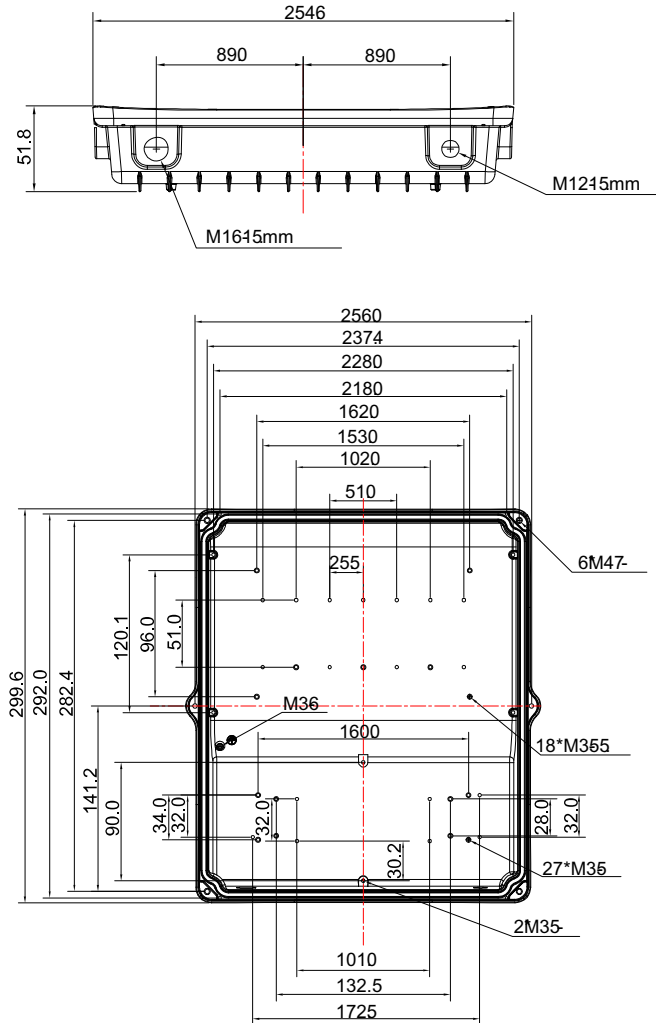
The surface undergoes an outdoor-specific silver powder coating treatment with added metal powder, enhancing the matte texture and expanding the heat dissipation area.

Exquisite and unique appearance
Outstanding heat dissipation performance

Marking unit: mm

Subject

100W heat dissipation main body



Lamp body heat sink

Material: ADC12 (aluminum)

Processing method: Integral die-casting

Surface treatment: Outdoor silver powder coating
Designed with an internal mold, it features highly efficient heat dissipation performance while maintaining a lightweight structure.

Private mold, exclusive patent!

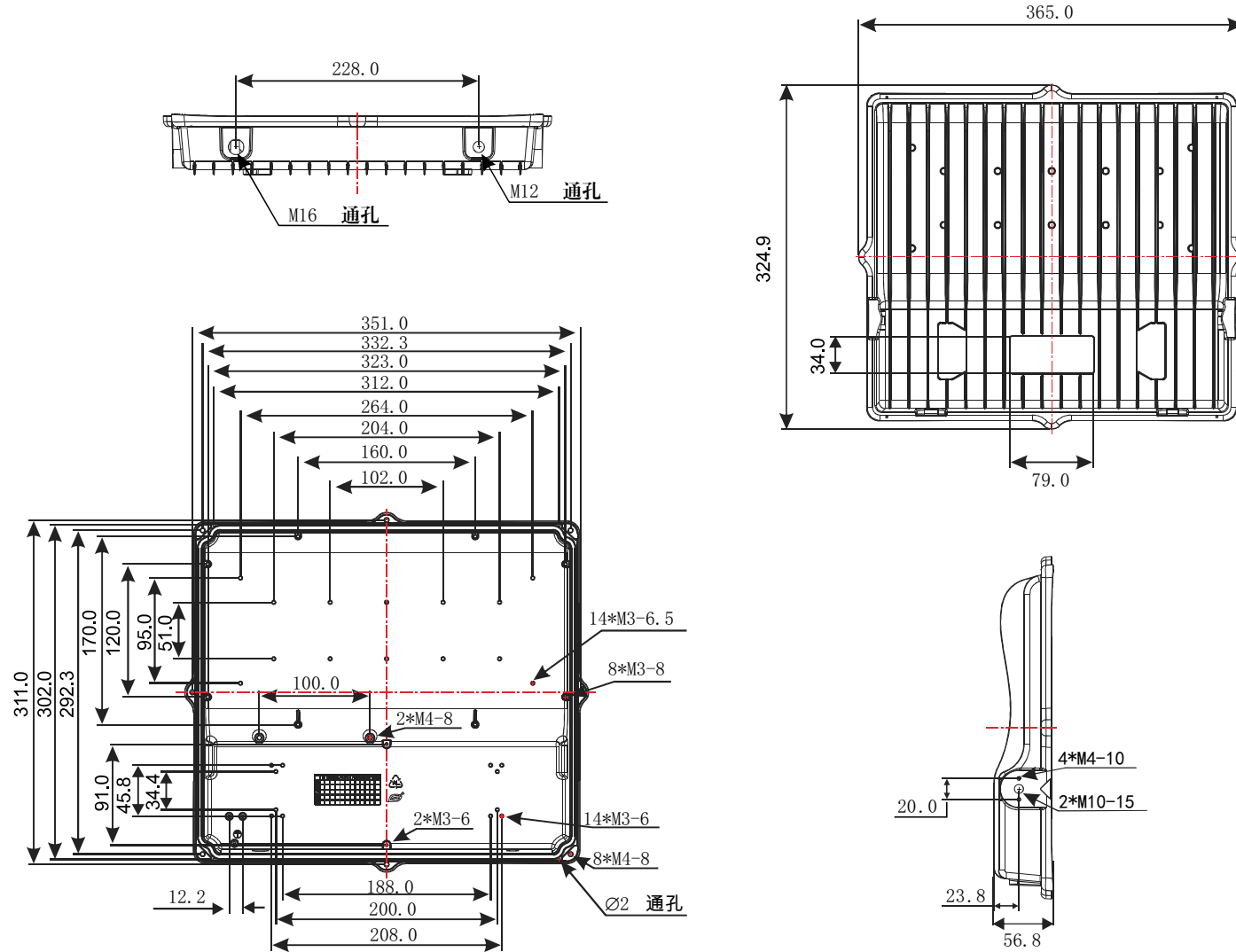
The surface undergoes an outdoor-specific silver powder coating treatment with added metal powder, enhancing the matte texture and expanding the heat dissipation area.

Exquisite and unique appearance
Outstanding heat dissipation performance

Marking unit: mm

Subject

150W heat dissipation main body



Lamp body heat sink

Material: ADC12 (aluminum)

Processing method: Integral die-casting

Surface treatment: Outdoor silver powder coating
Designed with an internal mold, it features highly efficient heat dissipation performance while maintaining a lightweight structure.

Private mold, exclusive patent!

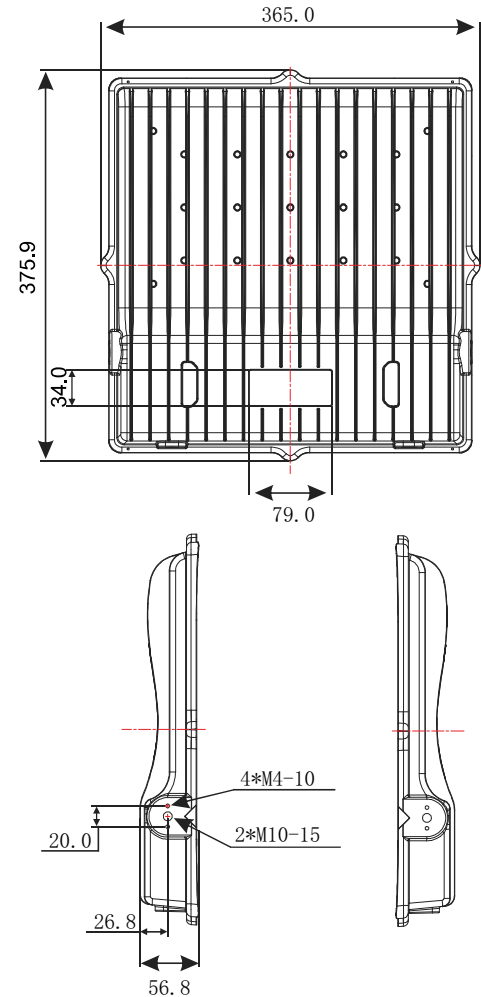
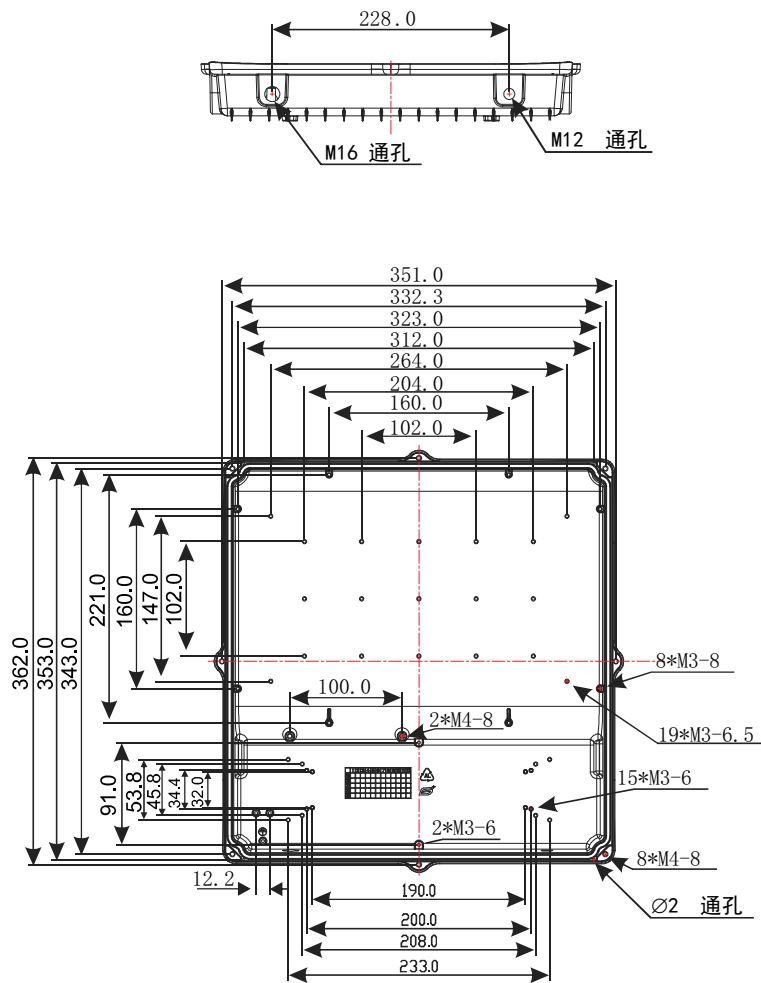
The surface undergoes an outdoor-specific silver powder coating treatment with added metal powder, enhancing the matte texture and expanding the heat dissipation area.

Exquisite and unique appearance
Outstanding heat dissipation performance

Marking unit: mm

Subject

200W heat dissipation main body



Lamp body heat sink

Material: ADC12 (aluminum)

Processing method: Integral die-casting

Surface treatment: Outdoor silver powder coating

Designed with an internal mold, it features highly efficient heat dissipation performance while maintaining a lightweight structure.

Private mold, exclusive patent!

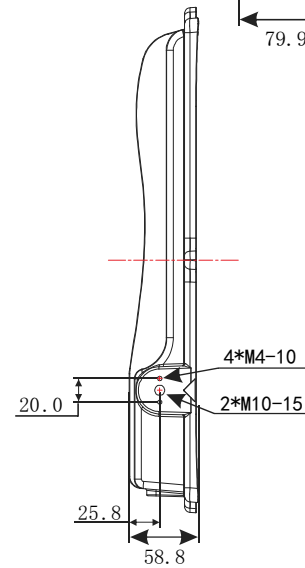
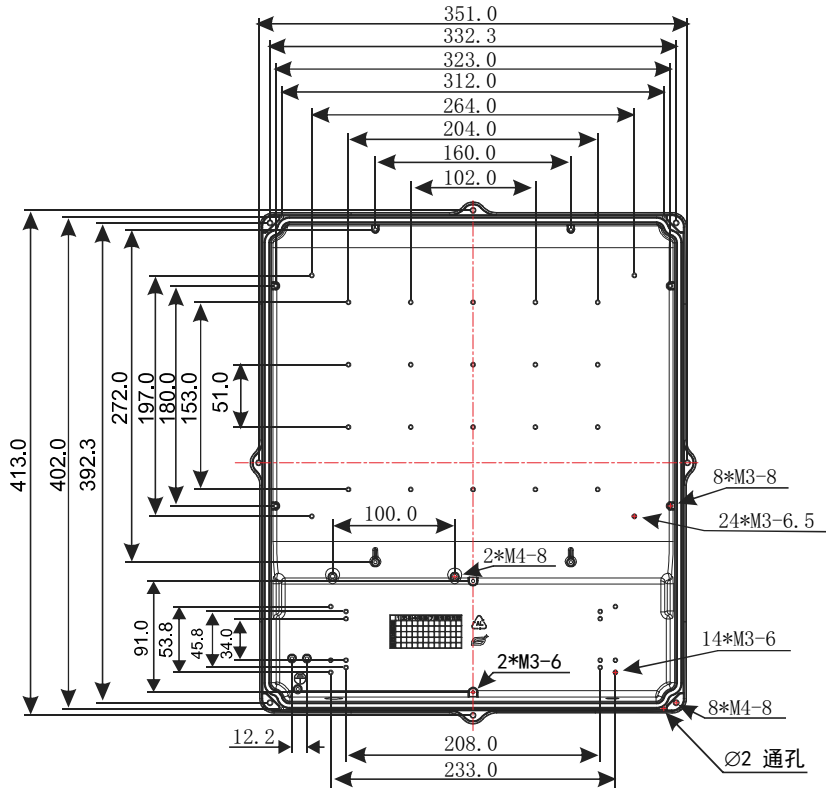
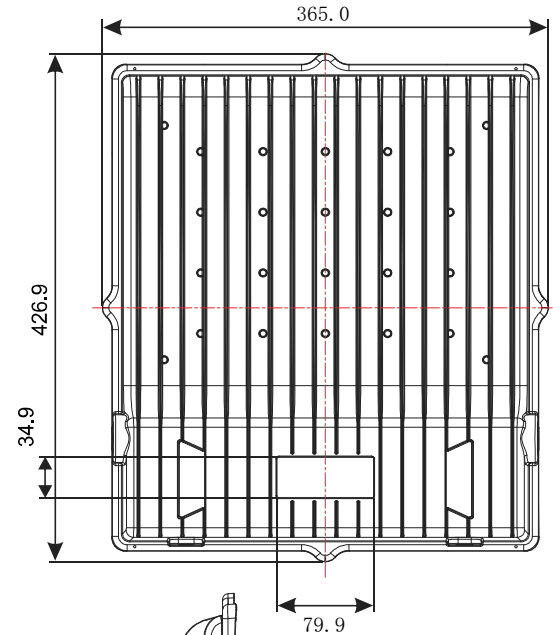
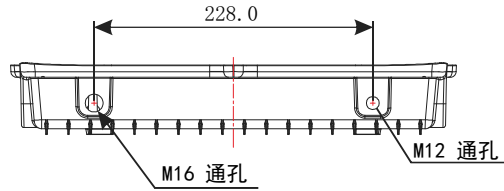
The surface undergoes an outdoor-specific silver powder coating treatment with added metal powder, enhancing the matte texture and expanding the heat dissipation area.

Exquisite and unique appearance
Outstanding heat dissipation performance

Marking unit: mm

Subject

250W heat dissipation main body



Lamp body heat sink

Material: ADC12 (aluminum)

Processing method: Integral die-casting

Surface treatment: Outdoor silver powder coating

Designed with an internal mold, it features highly efficient heat dissipation performance while maintaining a lightweight structure.

Private mold, exclusive patent!

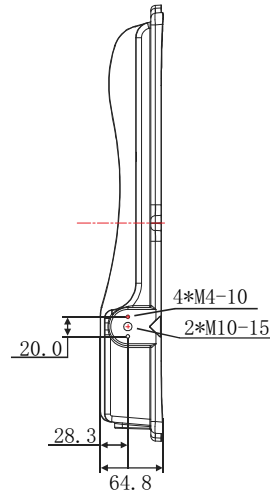
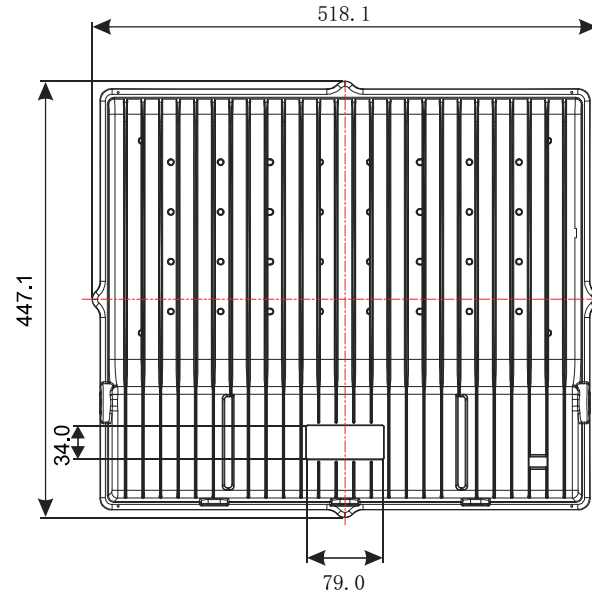
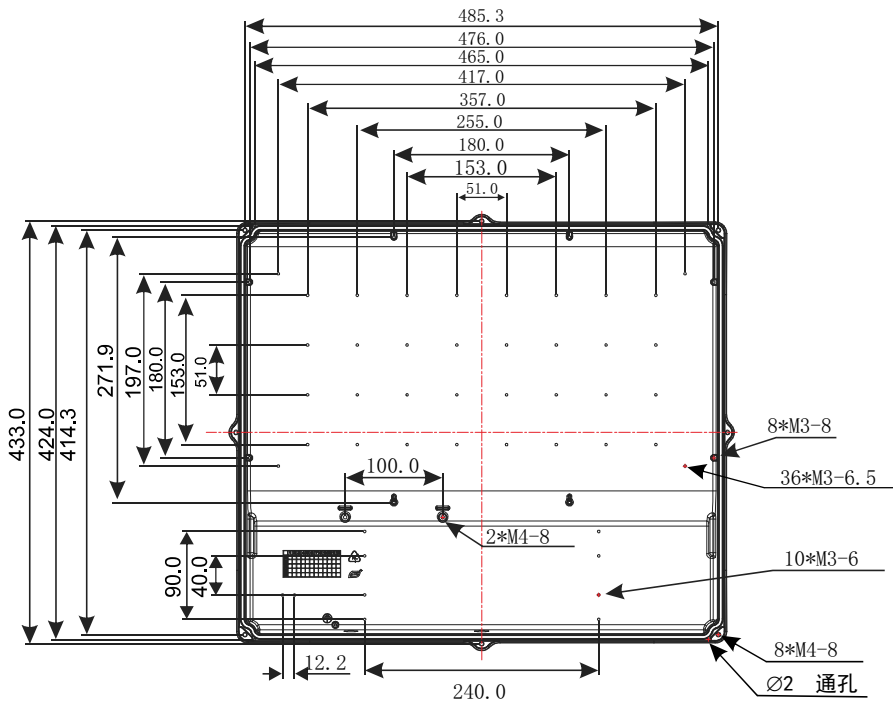
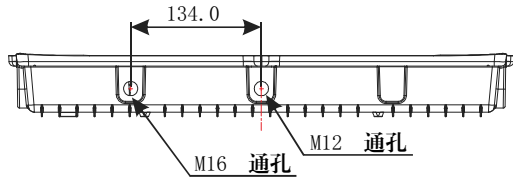
The surface undergoes an outdoor-specific silver powder coating treatment with added metal powder, enhancing the matte texture and expanding the heat dissipation area.

Exquisite and unique appearance
Outstanding heat dissipation performance

Marking unit: mm

Subject

200W heat dissipation main body



Lamp body heat sink

Material: ADC12 (aluminum)

Processing method: Integral die-casting

Surface treatment: Outdoor silver powder coating

Designed with an internal mold, it features highly efficient heat dissipation performance while maintaining a lightweight structure.

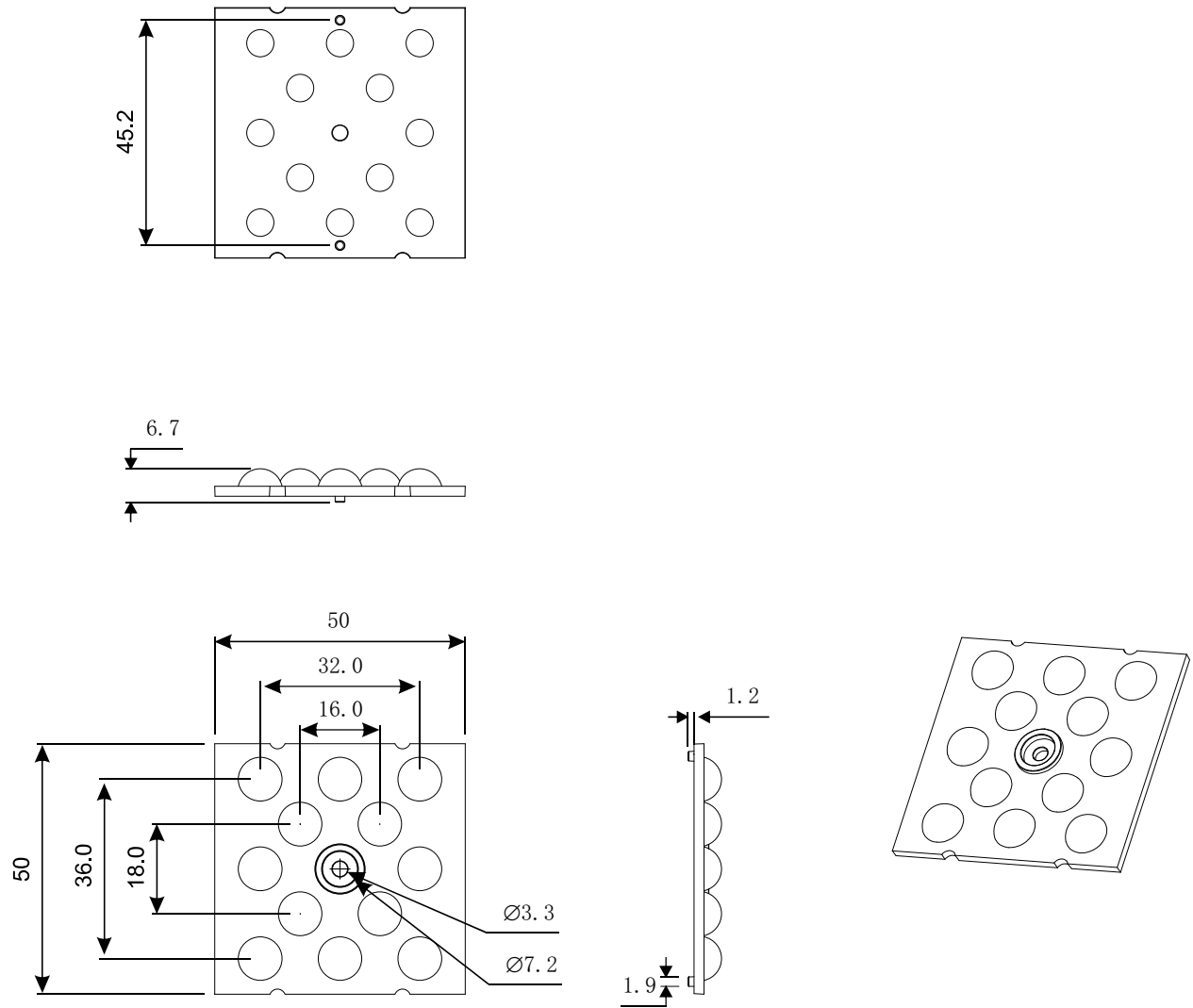
Private mold, exclusive patent!

The surface undergoes an outdoor-specific silver powder coating treatment with added metal powder, enhancing the matte texture and expanding the heat dissipation area.

Exquisite and unique appearance
Outstanding heat dissipation performance

Marking unit: mm

Mirror



Mirror

Material: PC

This lens is suitable for 3030 light bulbs.

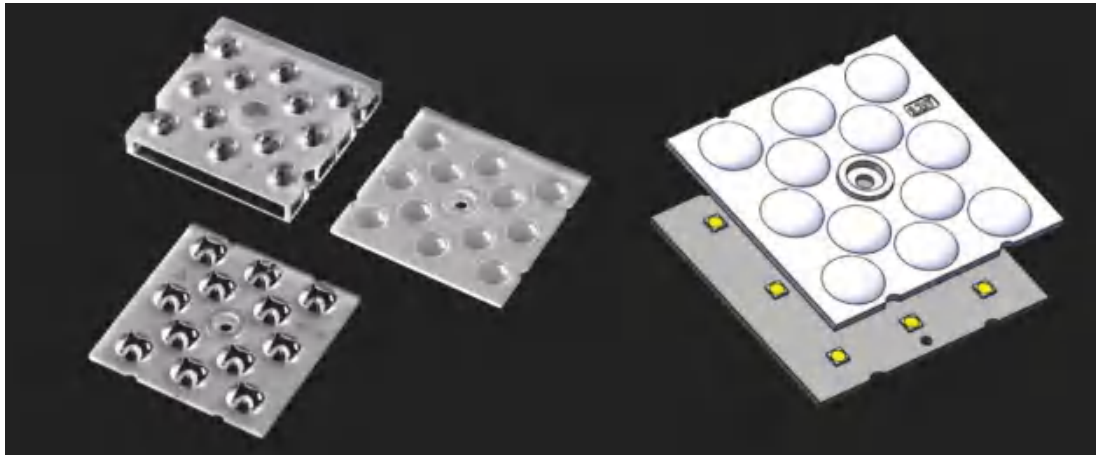
Different lens angles are applicable to different environments.

Currently equipped with: 30° / 60° / 90° / 120°

Exquisite and unique appearance
Outstanding heat dissipation performance

Marking unit: mm

Mirror



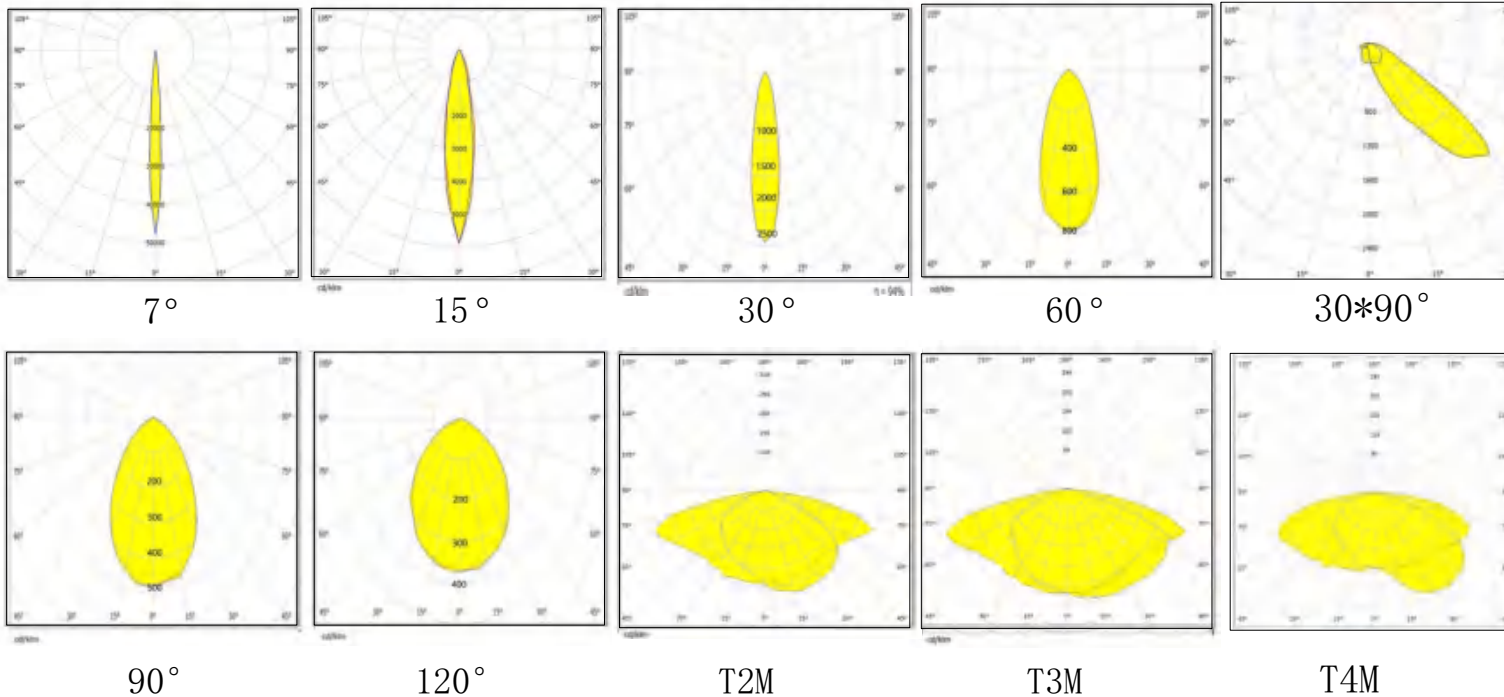
Mirror

Material: PC

This lens is suitable for 3030 light bulbs.

Different lens angles are applicable to different environments.

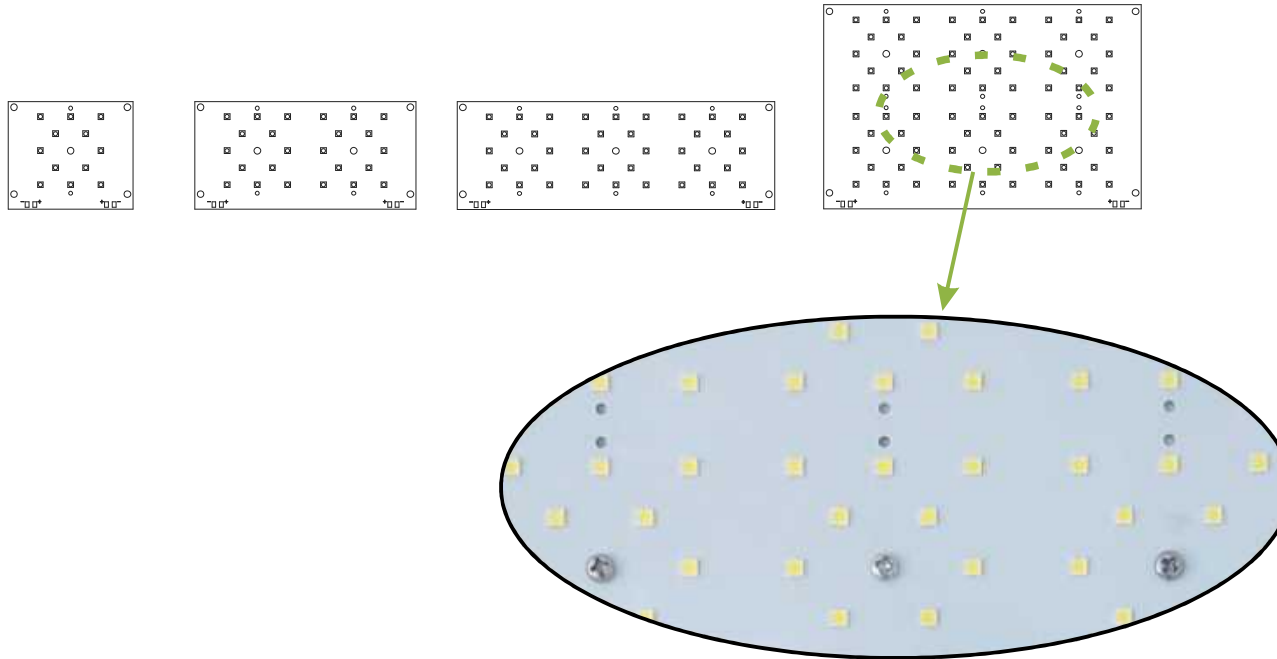
Currently equipped with: 30° / 60° / 90° / 120°



Exquisite and unique appearance
Outstanding heat dissipation performance

Marking unit: mm

Aluminum substrate



Aluminum substrate

Copper thickness: 35um

Surface treatment: White oil with black characters

Light source: 3030

Series-parallel: 6 series 2 parallel / 6 series 4

parallel / 6 series 6 parallel / 6 series 12 parallel /

6 series 20 parallel / 6 series 30 parallel / 6 series

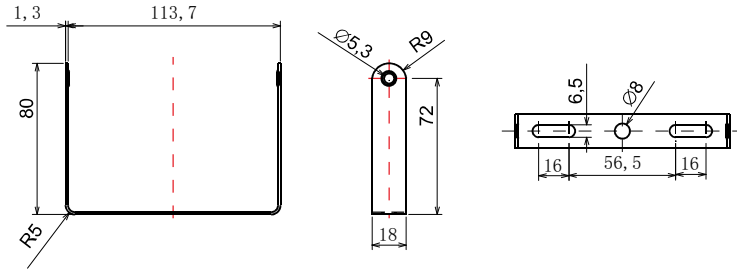
40 parallel / 6 series 64 parallel

Exquisite and unique appearance
Outstanding heat dissipation performance

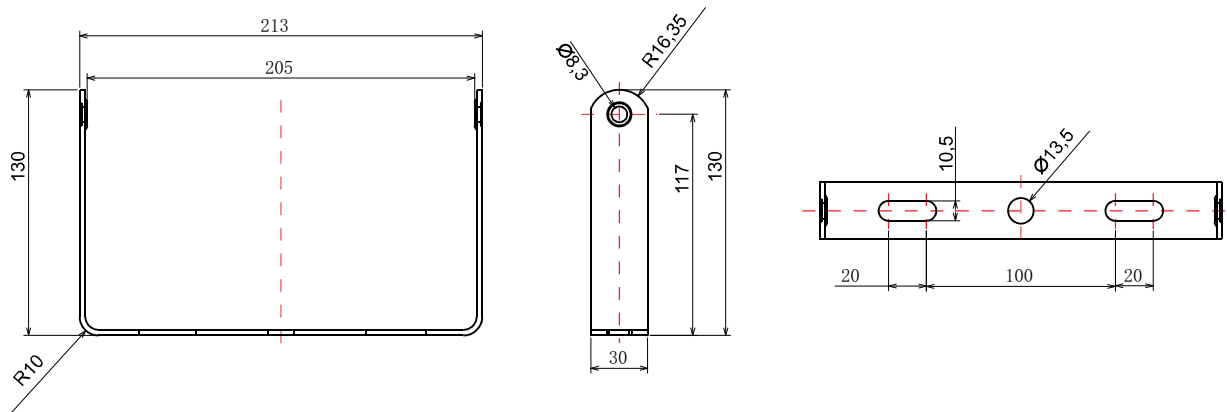
Marking unit: mm

Supporting frame

10W Installation Bracket



30W Installation Bracket



Supporting frame

Material: Q235 (iron)

Processing method: Metal stamping and bending

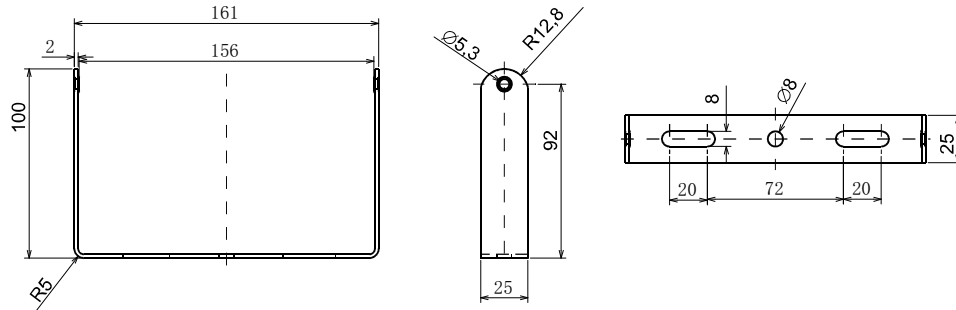
Surface treatment: Outdoor silver powder coating

Exquisite and unique appearance
Outstanding heat dissipation performance

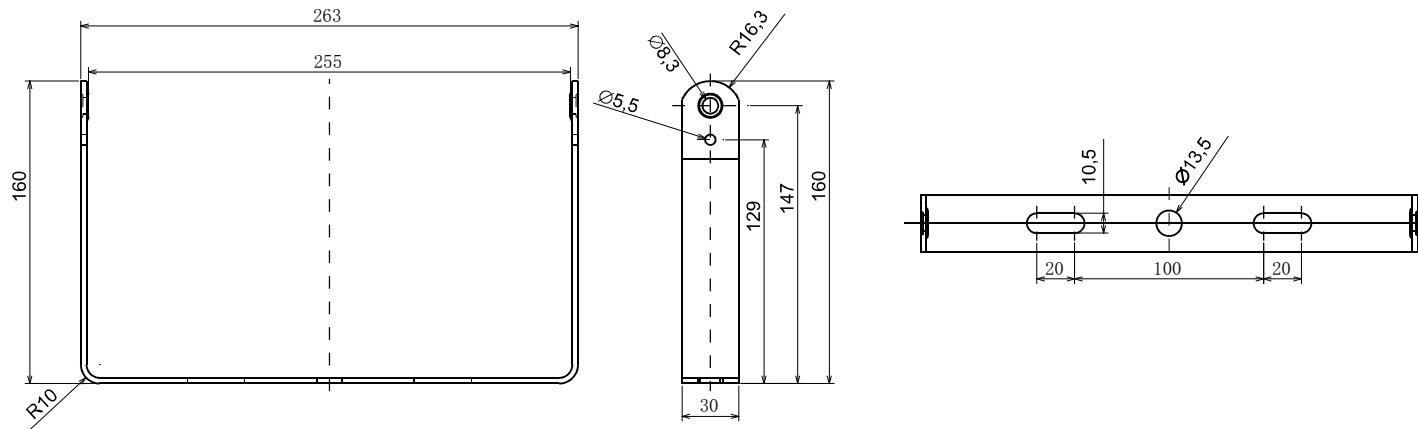
Marking unit: mm

Supporting frame

50W Installation Bracket



100W Installation Bracket



Supporting frame

Material: Q235 (iron)

Processing method: Metal stamping and bending

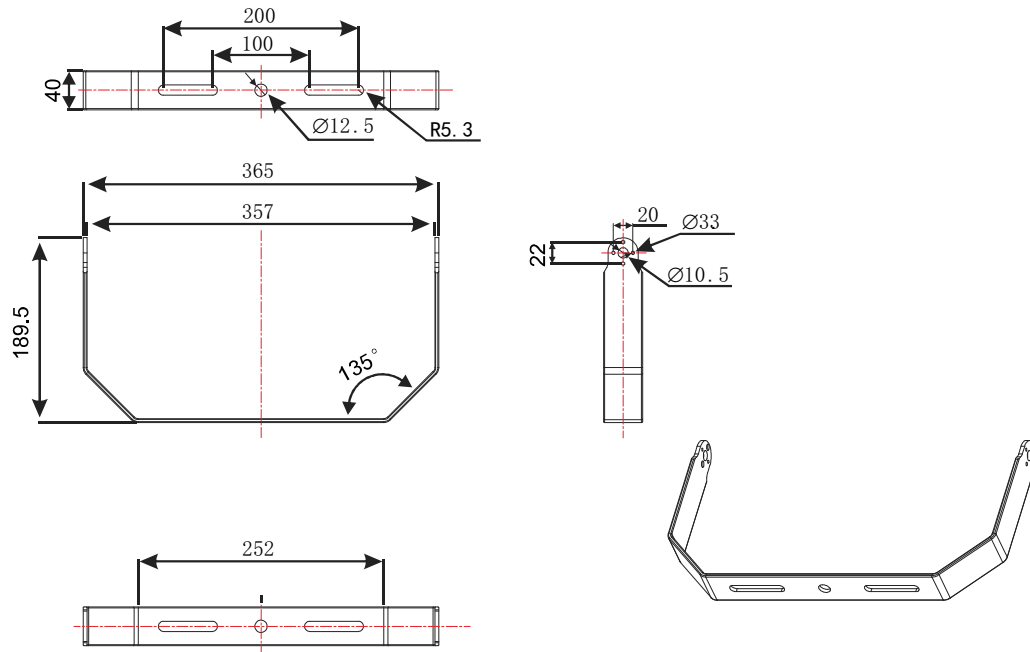
Surface treatment: Outdoor silver powder coating

Exquisite and unique appearance
Outstanding heat dissipation performance

Marking unit: mm

Supporting frame

150-250W Installation Bracket



Supporting frame

Material: Q235 (iron)

Processing method: Metal stamping and bending

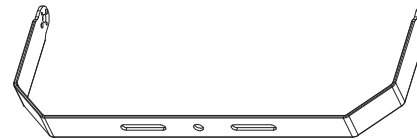
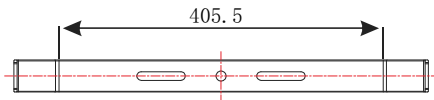
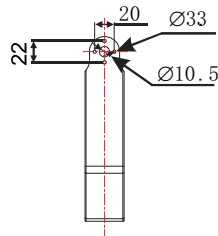
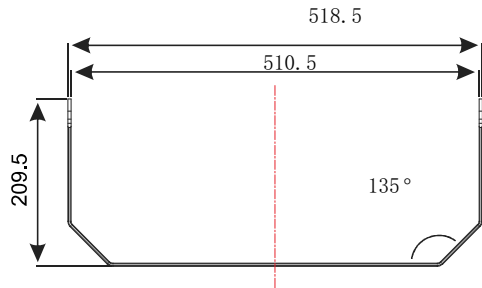
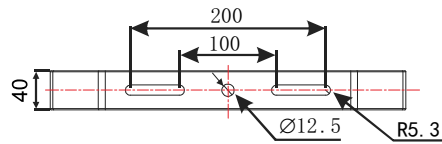
Surface treatment: Outdoor silver powder coating

Exquisite and unique appearance
Outstanding heat dissipation performance

Marking unit: mm

Supporting frame

350W Installation Bracket



Supporting frame

Material: Q235 (iron)

Processing method: Metal stamping and bending

Surface treatment: Outdoor silver powder coating

Exquisite and unique appearance
Outstanding heat dissipation performance

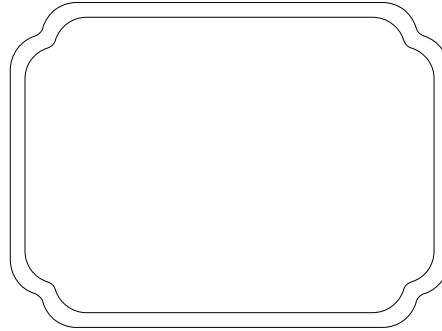
Marking unit: mm

Other accessories

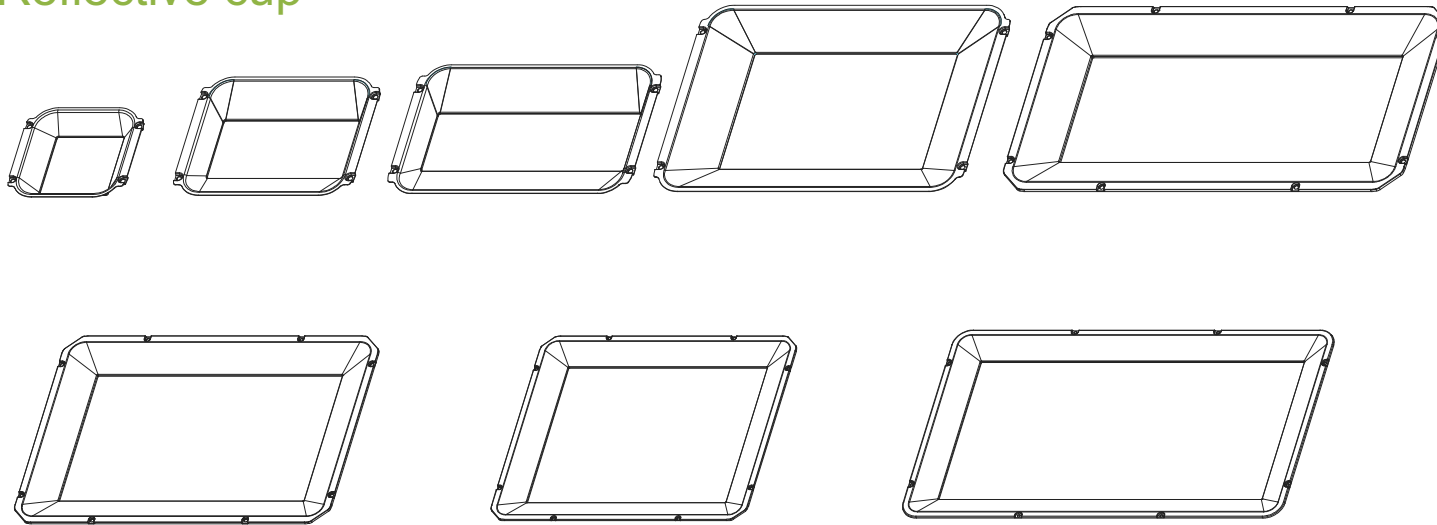
Waterproof connector and respirator



Waterproof gasket



Reflective cup



Other accessories

Sealing ring: Smooth surface, hardness 30°
silicone (rubber)

Exquisite and unique appearance
Outstanding heat dissipation performance

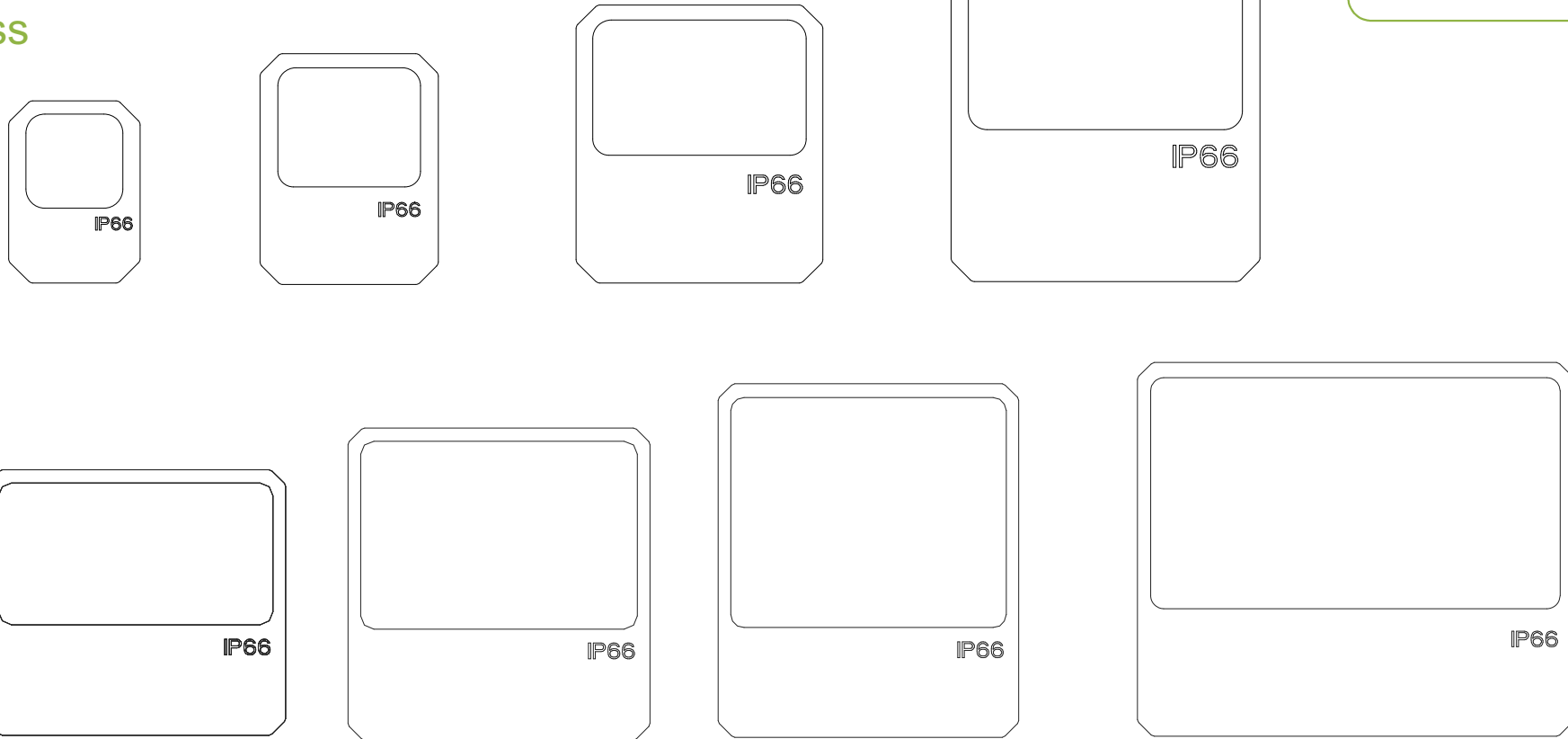
Marking unit: mm

Other accessories

Glass sheeting



Glass



Other accessories

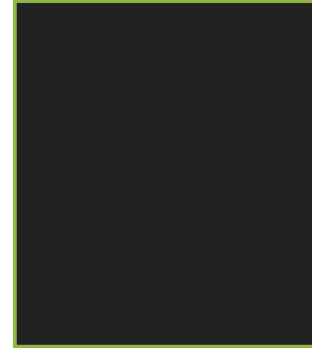
Glass material: Ultra-clear tempered glass

Glass thickness: 4mm

Exquisite and unique appearance

Outstanding heat dissipation performance

Surface treatment



Lamp surface treatment

Processing method: Printing, curing, and applying a professional outdoor spray coating. The powder material is enhanced with metal powder, which improves heat dissipation and gives a frosted texture!

Meets the 48-hour salt spray test requirements

(test according to GB/T 2423.17-2008)

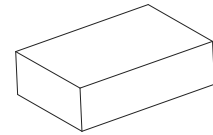
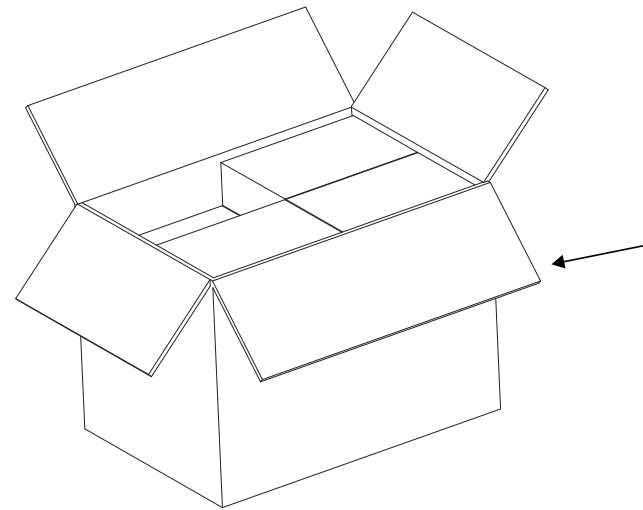
Meets the 28-day continuous solar radiation test requirements

(test according to GB/T 2423.24-1995)

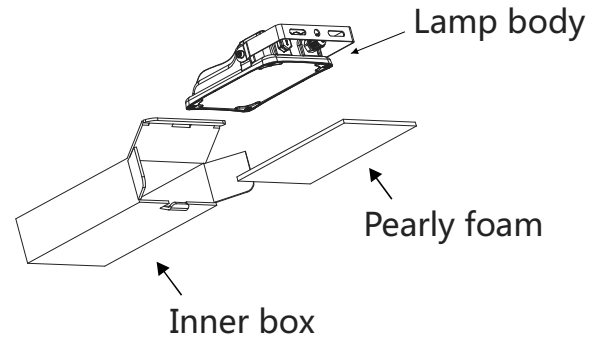
Complies with RoHS standards requirements

Exquisite and unique appearance
Outstanding heat dissipation performance

Packaging



Outer box



Lamp body

Pearly foam

Inner box

Packaging

Neutral cardboard box

PE bag

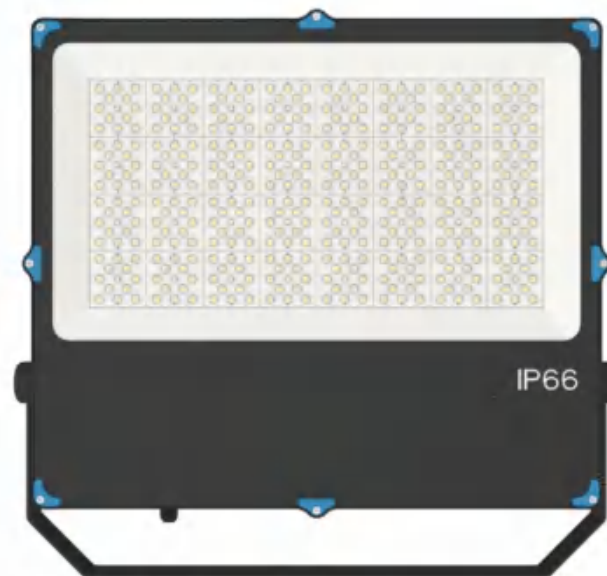
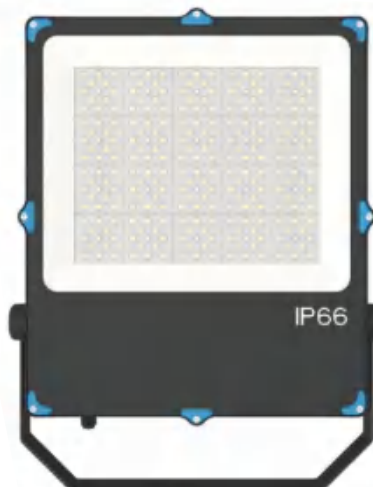
Pearly foam

Exquisite and unique appearance

Outstanding heat dissipation performance

Model	Package size		Packaging quantity	Gross weight
FDL-S3-10W	Inner box	196*128*56mm	1pcs	0.5kgs
	Outer box	407*270*295mm	20pcs	11kgs
FDL-S3-30W	Inner box	254*175*60mm	1pcs	0.9kgs
	Outer box	522*365*315mm	20pcs	19kgs
FDL-S3-50W	Inner box	296*226*60mm	1pcs	1.4kgs
	Outer box	465*311*315mm	10pcs	15kgs
FDL-S3-100W	Inner box	372*292*60mm	1pcs	2.1kgs
	Outer box	596*387*315mm	10pcs	22kgs
FDL-S3-150W	440*420*115mm		1pcs	4.1kgs
FDL-S3-200W	490*420*115mm		1pcs	4.6kgs
FDL-S3-250W	540*420*115mm		1pcs	5.6kgs
FDL-S3-350W	580*570*115mm		1pcs	8.3kgs

Finished product picture



Explanation

Complete kits are available for purchase.

The kits do not include: wires, light sources, and power drivers.

This lighting technology is exclusively owned by our company and the final interpretation rights belong to our company.

Exquisite and unique appearance

Outstanding heat dissipation performance